
2016 Maurie Pawsey Scholarship

TEFMA

Nicole Eaton
September 2017

Contents

1. Thank you
2. Acknowledgements
3. Overall Key Observations
4. University of Helsinki
5. Universities of the United Kingdom
6. Coventry University
7. University of Chicago
8. APPA
9. Microsoft
10. Amazon
11. LinkedIn
12. Questions

Thank you



Acknowledgements

LinkedIn



THE UNIVERSITY OF
CHICAGO

amazon



Loughborough
University

APPA

UCL



Microsoft



UNIVERSITY OF
OXFORD



UNIVERSITY OF HELSINKI

RMIT
UNIVERSITY



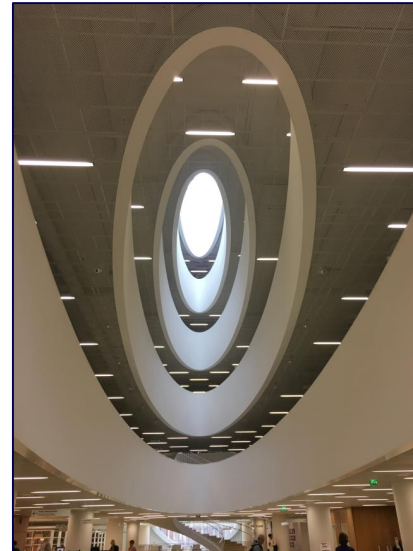
University of
Nottingham
UK | CHINA | MALAYSIA

Coventry
University



Overall Key Observations

- How lucky students at Australian Universities are.
- Challenges are the same no matter the corner of the globe you are from.
- UK delegates space and campus planning decisions to committees.
- USA FM departments have a real understanding of what they do and how they support the success of the University.



University of Helsinki

University of Helsinki
(parent group)

Helsinki University
Properties Ltd

University of Helsinki
Property Services Ltd



National Library, 1845

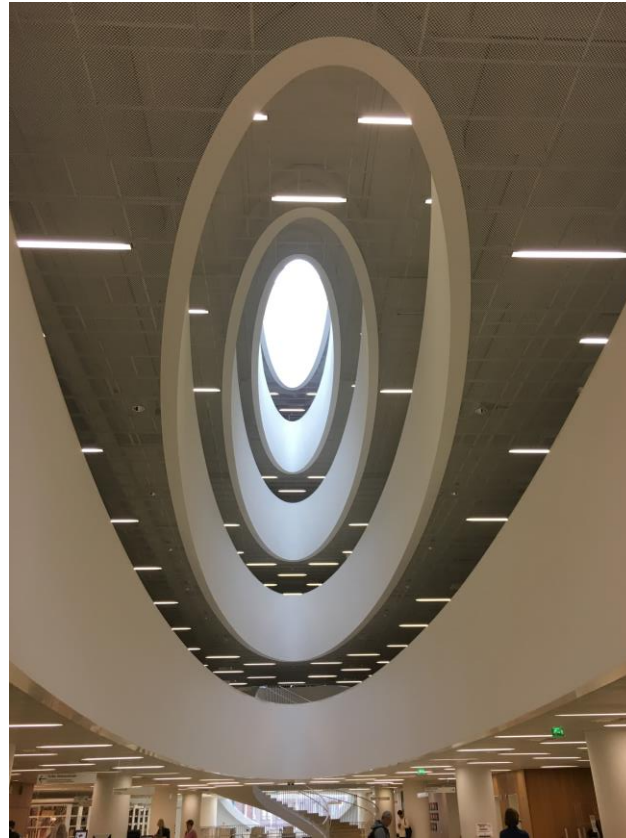


National Library, Locker Room

University of Helsinki



Uni of Helsinki Main Building



University of Helsinki, Library



University of Helsinki



Think Corner



Think Corner

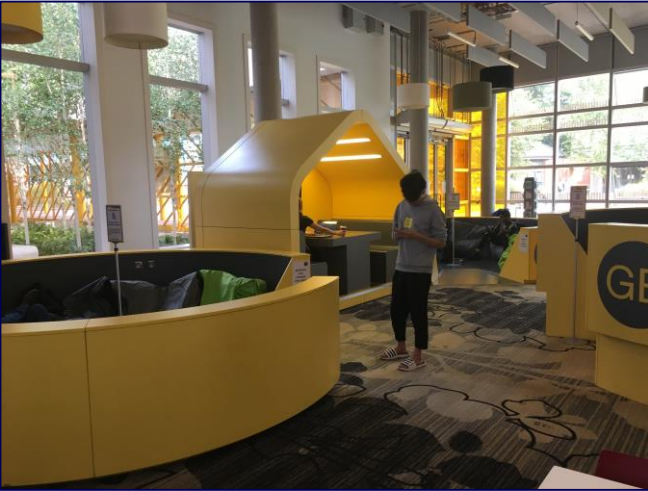
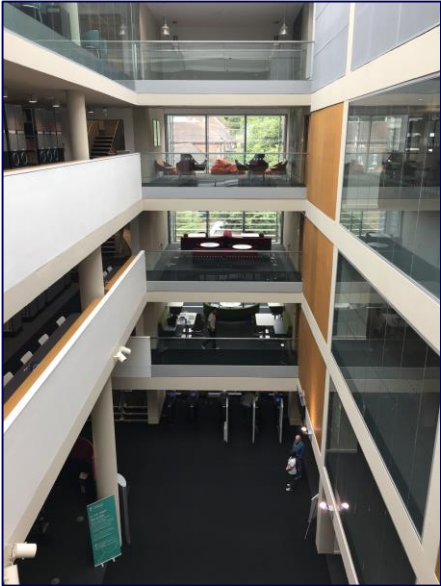


Seminar Space, Education



Seminar Space, Education

Universities of the United Kingdom



Libraries





University of Chicago

The Facilities Management group has set themselves the target of receiving the APPA Award for Excellence in 2020. They want to be recognised as pre-eminent in FM as the University is in academia and has developed an outward mindset to engage, improve and share.



Edward H Levi Hall, connecting to the Main Quad



Joe and Rika Mansueto Library

Summer 2017 Campus Projects

Last update: 5/31/2017



Legend

- Interior Project
- Exterior Project
- Interior and Exterior Project
- Facade Improvements - main-quad buildings
- Vault/Tunnel & Hatch repairs
- Landscape Projects and Signage

Campus Accessibility Notice

Ongoing construction projects or street repairs may temporarily limit accessibility. The University encourages you to review the status of University construction projects at the [Facilities Services Campus Plan and Construction site](http://facilities.uchicago.edu/construction/).
 (http://facilities.uchicago.edu/construction/)
 Should you have any questions, concerns, or suggestions for improving accessibility on any of the routes, please contact Facilities Services at (773) 834 1414.

Project List

1) 59th and Woodlawn Tunnel PM: Daniel Albo Schedule: 7/15/17 to 8/25/17	18) Electrical Upgrades PM: Jim Garcia Schedule: 6/12/17 to 9/15/17
2) Levi Hall-elevator replacement PM: Richard Wigley Schedule: 6/12 to 9/29	19) International House tower façade repairs PM: Barry O'Quinn Schedule: 6/12/17 to 9/15/17
3) PSD interior project-Kent PM: Tom Deal Schedule: 7/1/17 to 12/31/17	20) Jones chilled water upgrades PM: Tom Deal Schedule: spring to mid-summer
4) PSD interior projects-Kersten and Hinds PM: John Barkow Schedule: 6/12/17 to 9/15/17	21) Reynolds Mechanical PM: Tom Deal Schedule: spring to mid-summer
5) Eckhart Roof Replacement PM: Barry O'Quinn Schedule: 6/12/17 to 9/15/17	22) ERC-lab renovations in various spaces PM: Tom Deal Schedule: summer 2017
6) McGiffert House-Phase 2 PM: Richard Wigley Schedule: 6/12/17 to 11/3/17	23) Searle-IME interior updates PM: Tom Deal Schedule: summer 2017
7) Stevanovich Institute on the Formation of Knowledge (SIFK) PM: C. Lee Schedule: ongoing through 8/31/17	24) Oskiers façade repairs PM: Barry O'Quinn Schedule: 6/12/17 to 9/15/17
8) Charter Schools PM: Michael Ross Schedule: ongoing through 12/31/17	25) Burton Judson-restroom upgrades (not shown on map) PM: Kareem Cousar Schedule: 6/12/17 to 9/15/17
9) Keller Center (not shown on map) PM: Angela Knoble Schedule: 4/3/17 through 12/1/18	26) Max Palevsky rescarpet PM: Kareem Cousar Schedule: 8/14/17 through 9/8/17
10) HVAC and plumbing projects: Cobb, Classics, Jones, Hinds, IN, Regenstein PM: Dan De Young Schedule: spring and summer 2017	27) Fire alarm upgrades at Reynolds Club, Ida Noyes and Henry Crown PM: Denise Davis Schedule: summer 2017
11) LASR Renovation & Expansion PM: Dan DeYoung Schedule: ongoing through 8/31/17	28) Rosenwald interior renovations PM: Jim Garcia Schedule: July 2017
12) LASR landscape PM: Kathleen Golomb Schedule: summer 2017	29) Sakih Hall PM: Denise Davis Schedule: July 2017
13) Crear Library PM: Jen Robles Schedule: Demolition begins March 2017; construction through Sept. 2018	30) Ryerson Hall PM: Barry O'Quinn Schedule: 6/12/17 to 9/15/17
14) Main Quad paver replacement PM: Denise Davis Schedule: 6/12/17 through 9/15/17	31) Reynolds Club-Dining-Pret a Manger build-out PM: TBD Schedule: 6/12/17 to 9/15/17
15) Rollard removal: Cobb/Abbott/58th and University (east and west) PM: Denise Davis Schedule: 6/12/17 through 9/15/17	

As Indicated on Map

- Vault and Tunnel and hatch repairs at various locations
PM: Daniel Albo
Schedule: Summer 2017 ●
- Facade repairs (phase 2 of 2) Bookstore, Cobb, Stuart, Rosenwald, OI
PM: Barry O'Quinn
Schedule: 6/12 to 9/15 ●
- Landscape Projects
PM: Kathleen Golomb
Schedule: Summer 2017 ●

APPA San Francisco

APPA are focused on providing excellence in today's educational environment, and trained on adapting, enhancing, and transforming the facilities of the future.

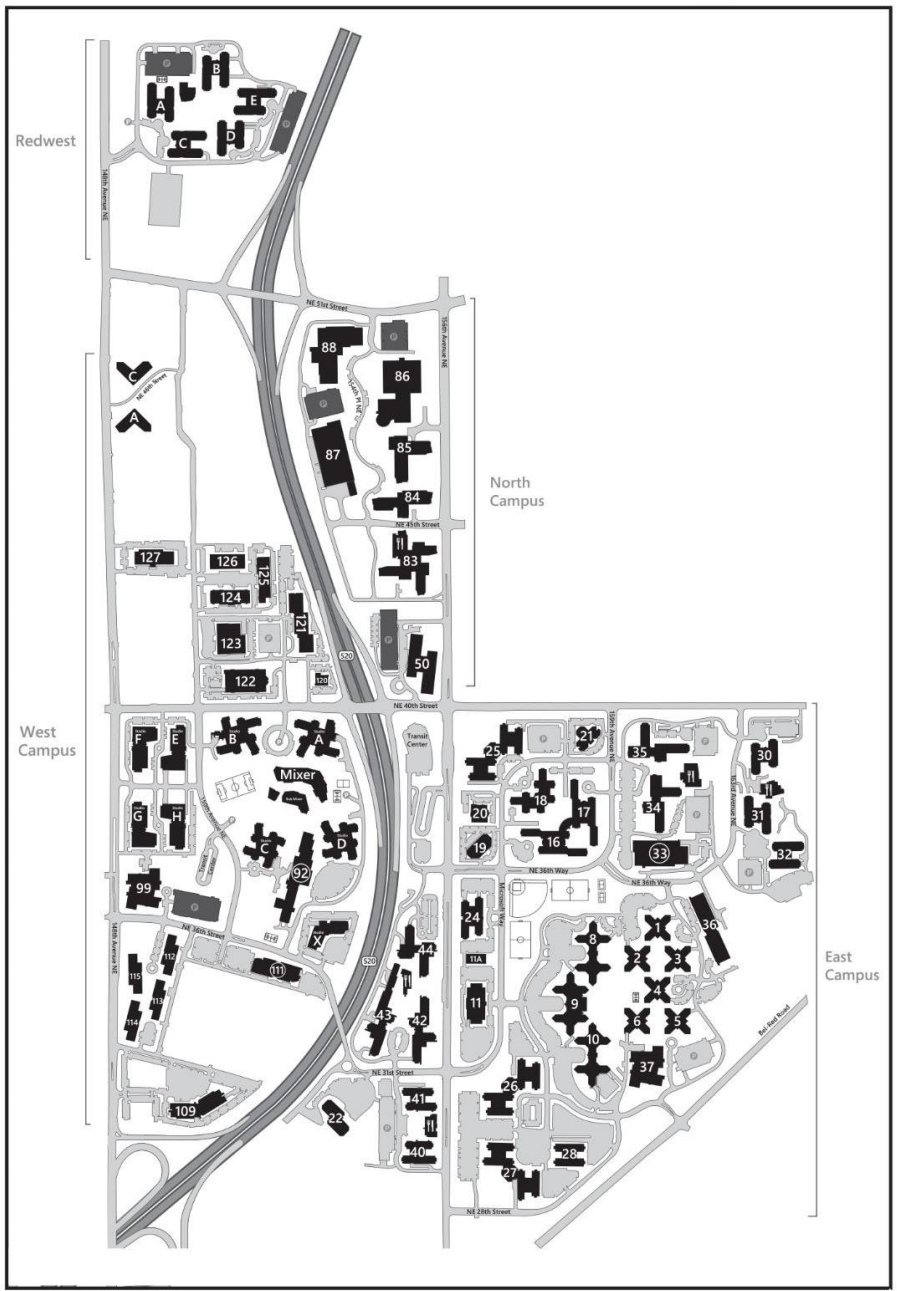
The conference provided:

- Thought provoking key note addresses on Leadership and Change, Big Data Analytics, and Transforming for Student Success.
- Workshops:
 - Montana University using a sandbox approach to transform classrooms into Active Learning Spaces.
 - Oklahoma State University growing by 1,200 students and introducing interdisciplinary learning for Arch, Eng. And Technology.
 - Facilities GIS, a review of 7 universities and how location based technologies are utilised.



Me @ the APPA Exhibition Hall

Microsoft Redmond Campus



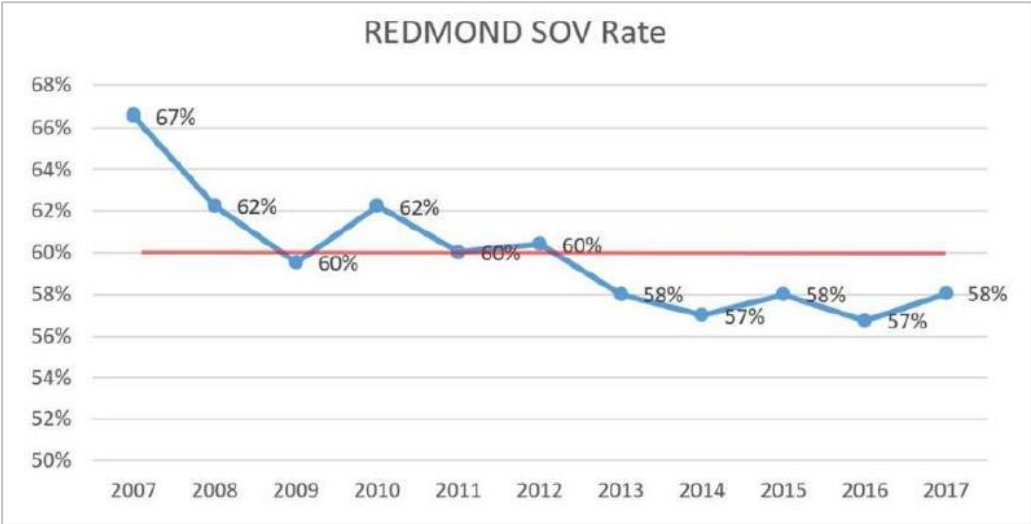
Microsoft Commute Services



65,000 commuters

50% live 5 miles or less

25% live in Seattle



Connector

Trips **3.9M+**

Daily **~3,400**

Routes **22**

buses **90**

Shuttle

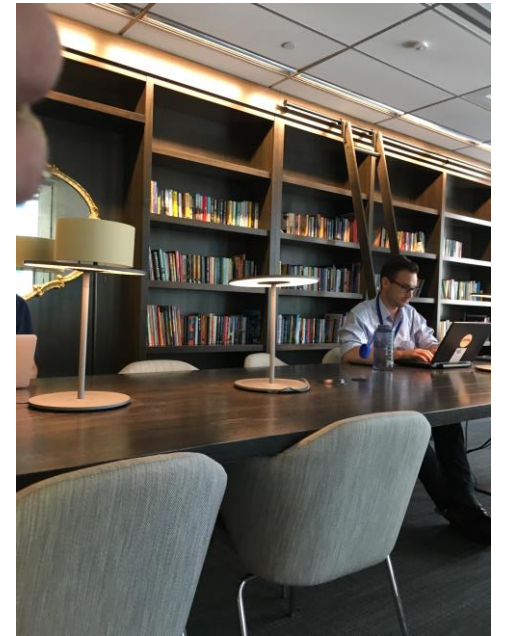
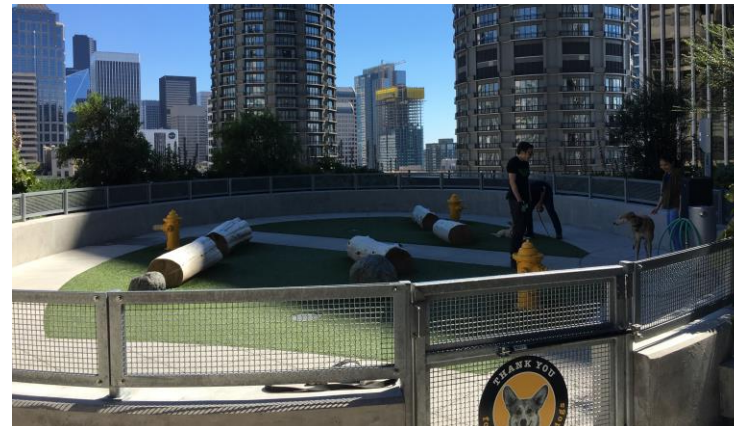
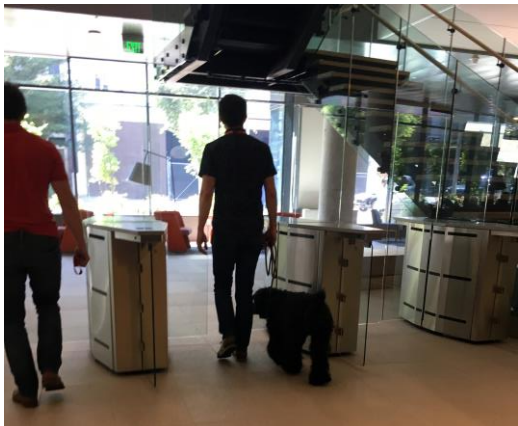
Vehicles **213**

Riders **~7K/day**

Wait time **~5mins**

Journey **~11mins**

Amazon Seattle Campus



LinkedIn Sunnyvale Campus





Nicole Eaton
Associate Director, Planning and Asset Utilisation
RMIT University
Nicole.Eaton@rmit.edu.au