

The Learning & Teaching Building A Commitment to Campus Life



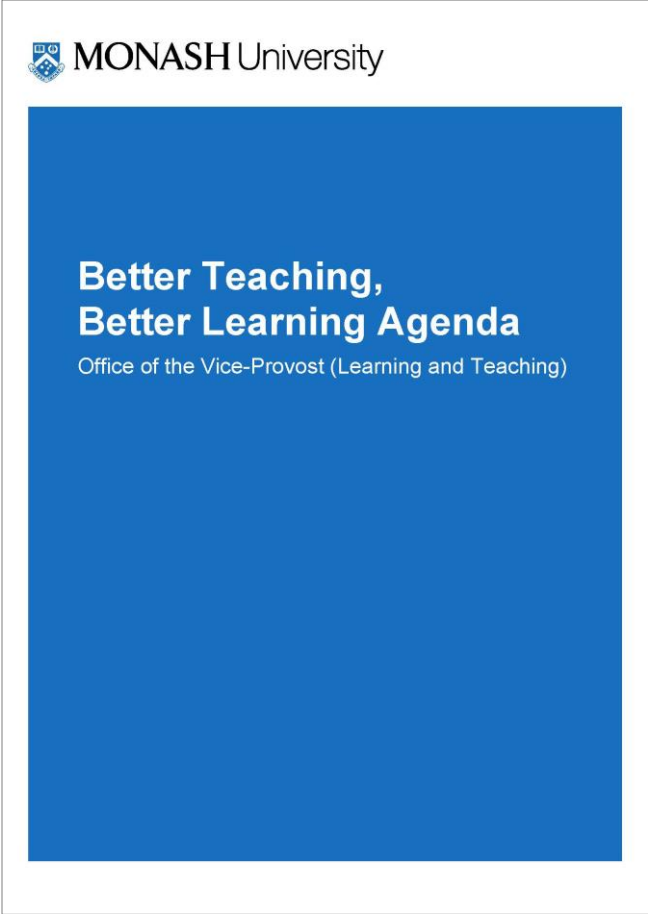
MONASH University



John Wardle
Architects



Two Strategic Documents



A New Front Door

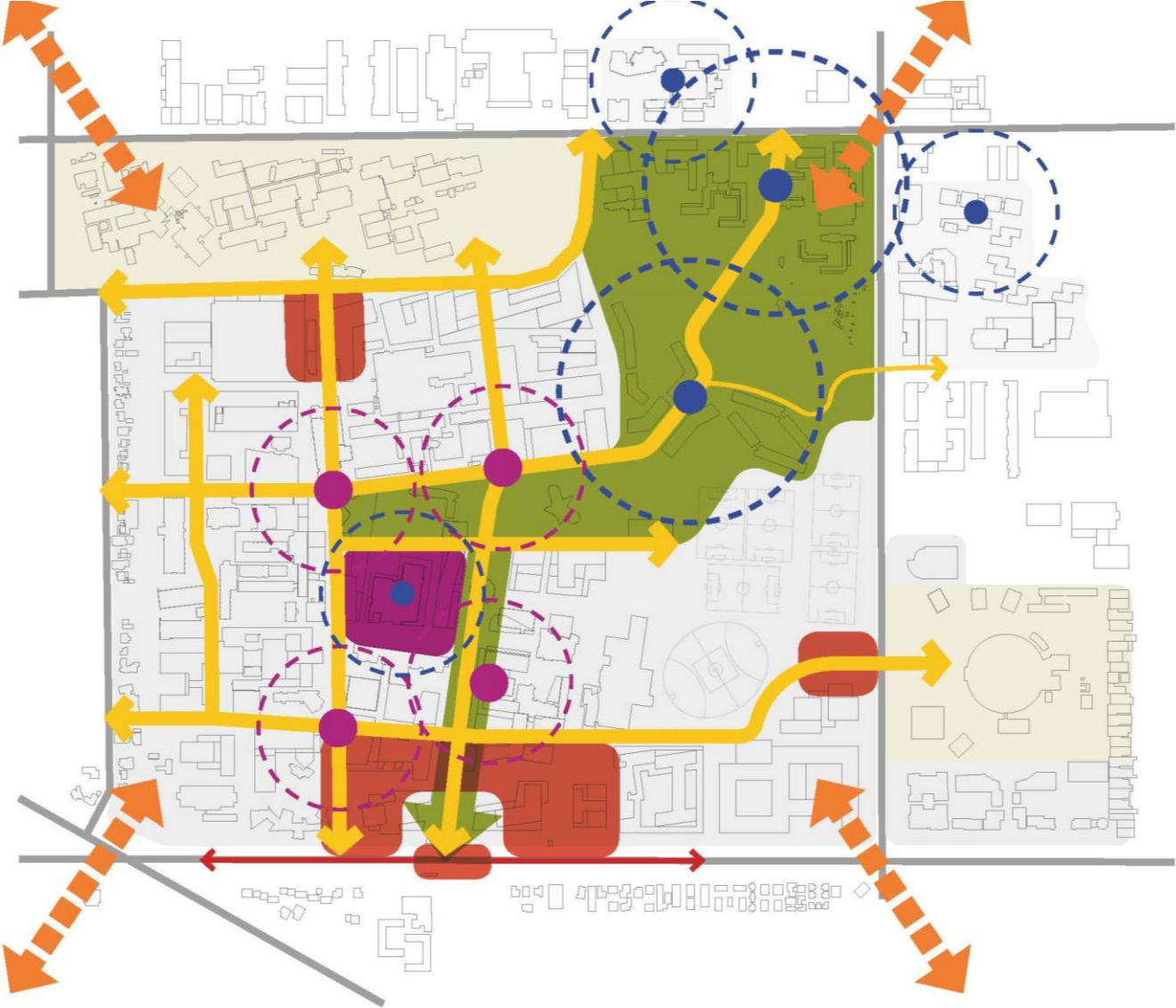
- 28,000m² GFA
- 4 levels
- 5 Star Greenstar rating
- Centralised learning & teaching spaces
- Faculty of Education
- Office of the Vice Provost – Learning & Teaching
- Retail
- Bus interchange
- 800 space car park



Clayton Campus Masterplan

A Dynamic & Engaged University City

-  A STRONG PRIMARY WALK NETWORK
-  A CELEBRATION OF THE NATIVE LANDSCAPE
-  RENEWED CAMPUS GATEWAYS AND AN INTEGRATED REGIONAL TRANSPORT HUB
-  HUBS OF LEARNING AND COLLABORATION
-  INCREASED ON-CAMPUS ACCOMMODATION
-  A FOCUS ON PARTNERSHIPS



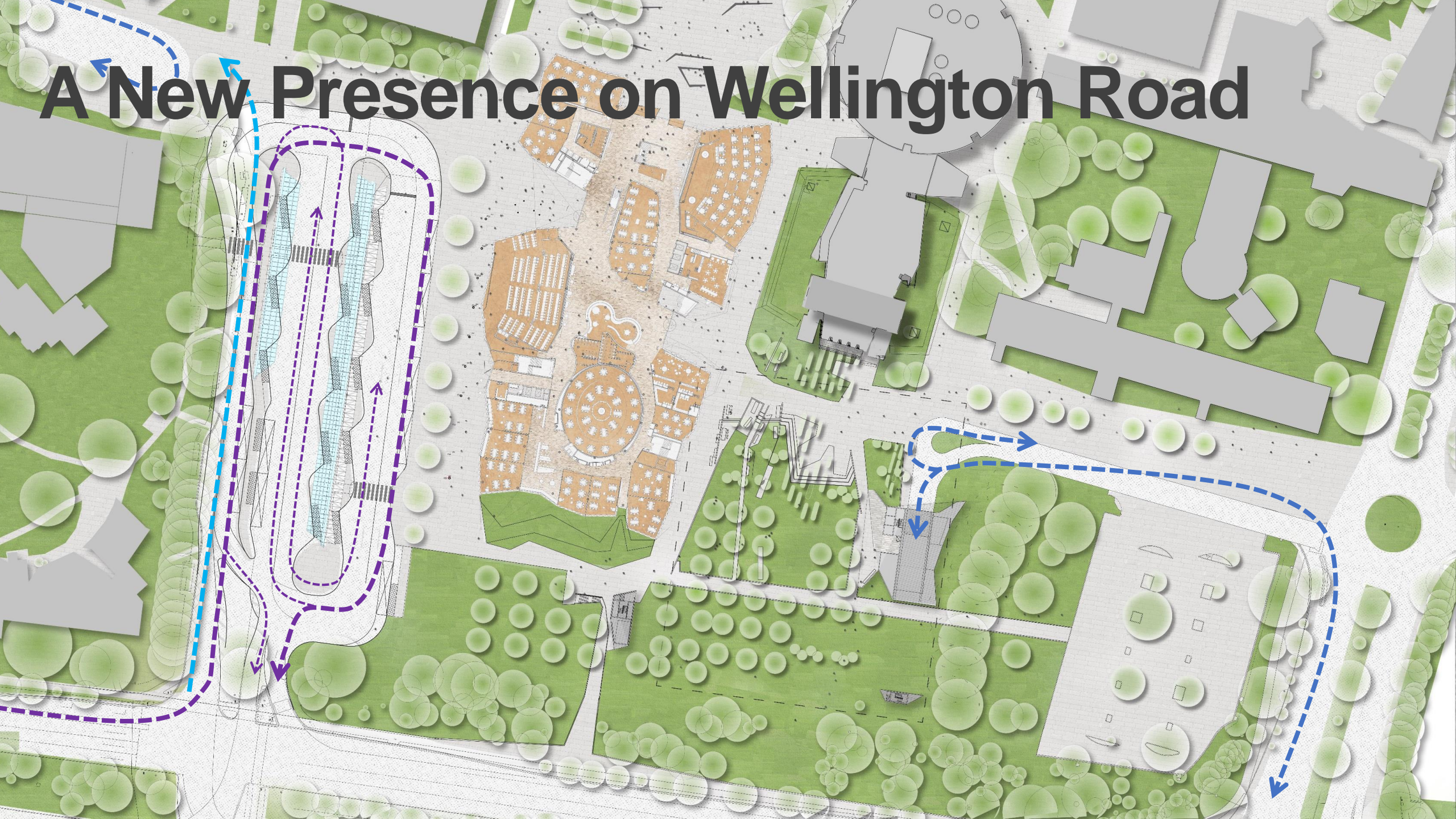
A New Presence on Wellington Road



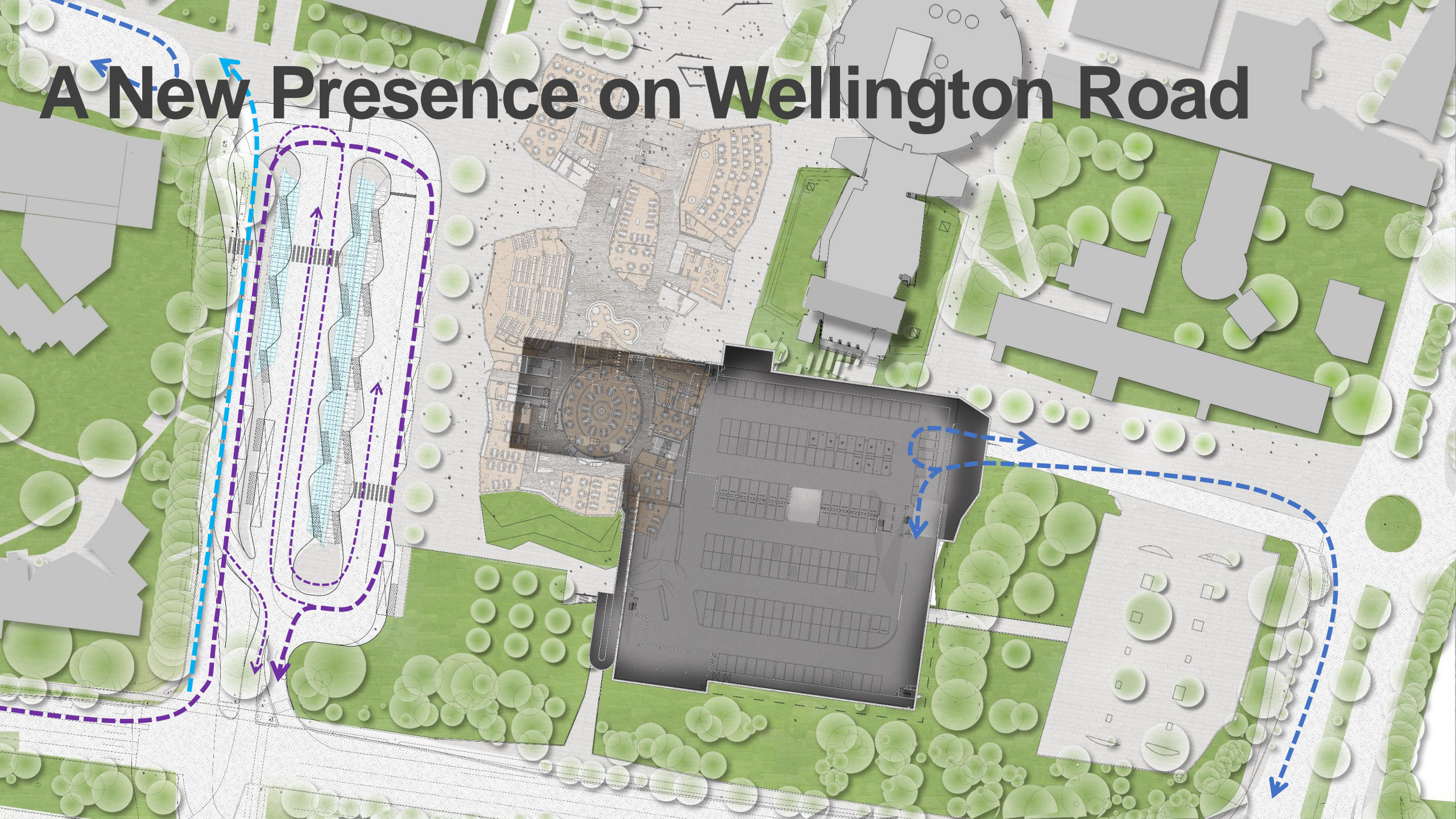
A New Presence on Wellington Road



A New Presence on Wellington Road



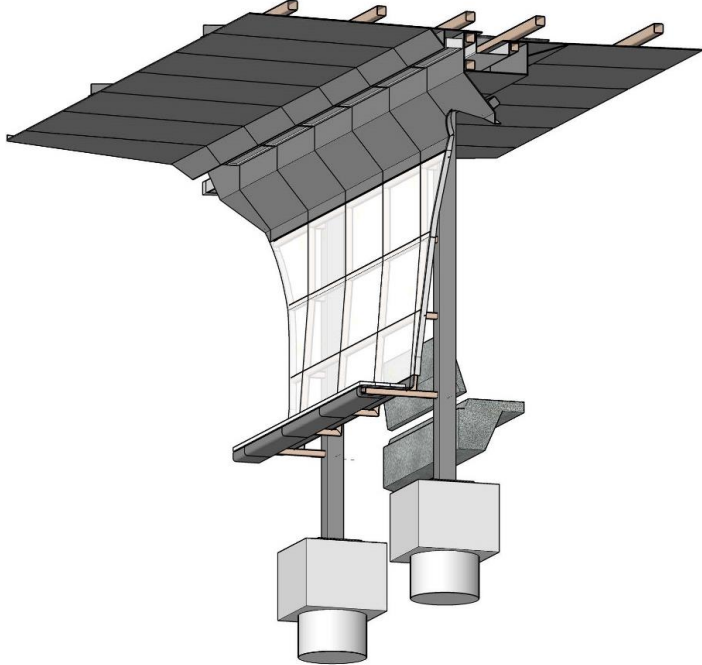
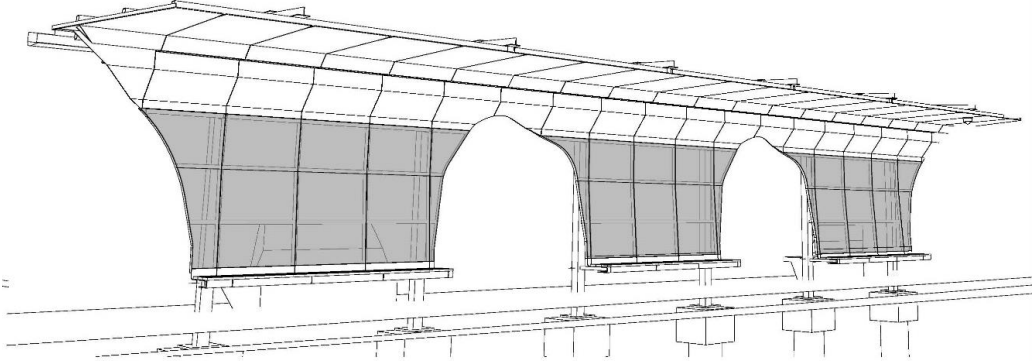
A New Presence on Wellington Road



An Arrival Point

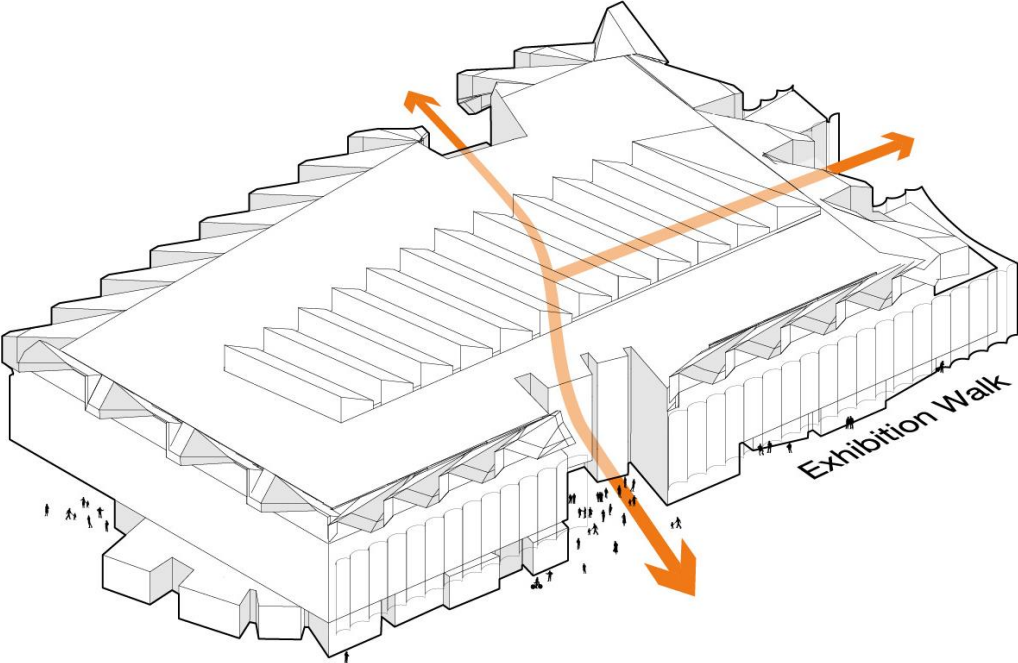


An Arrival Point

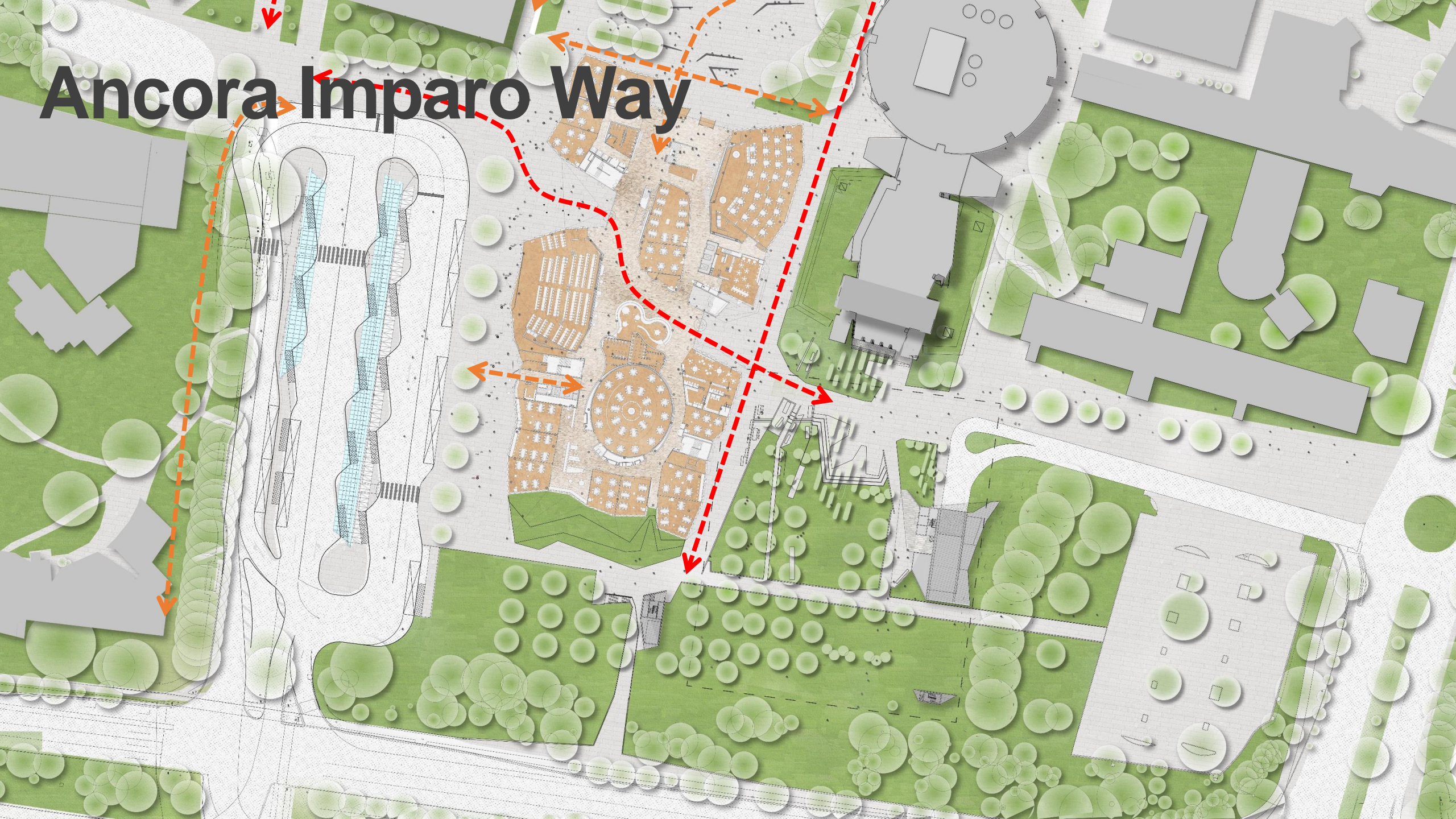




A Primary Walk Network

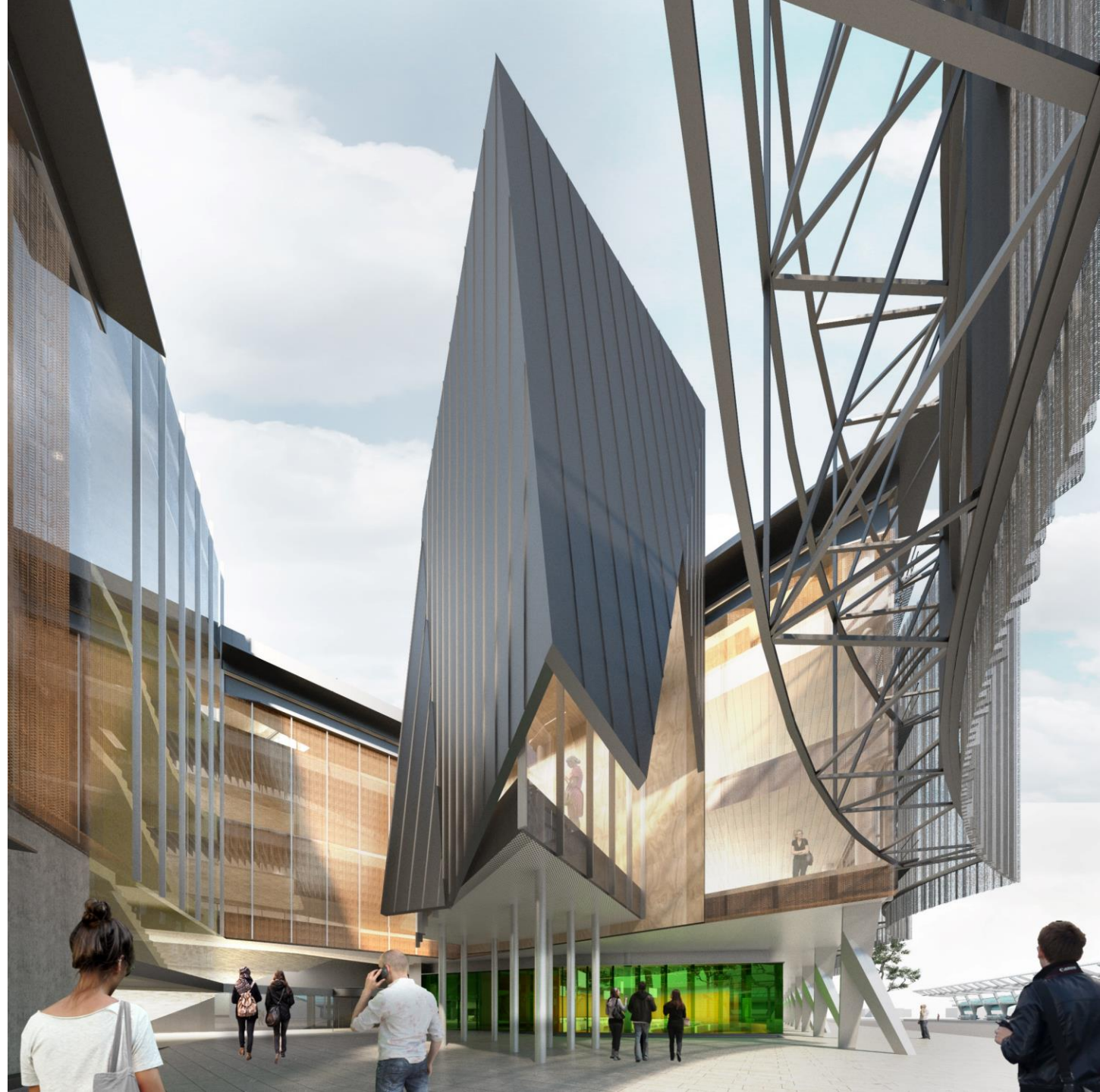


Ancora Imparo Way

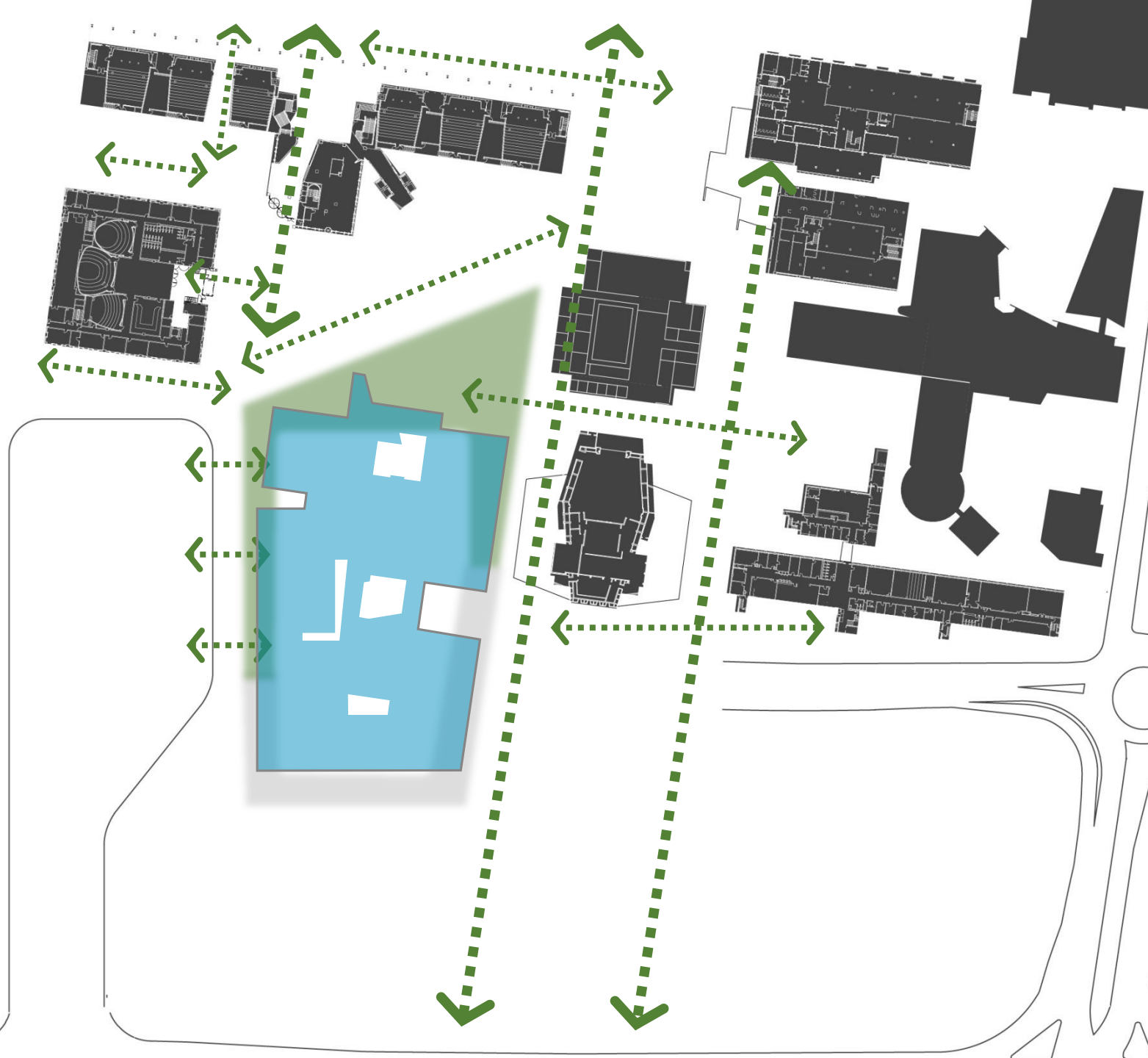




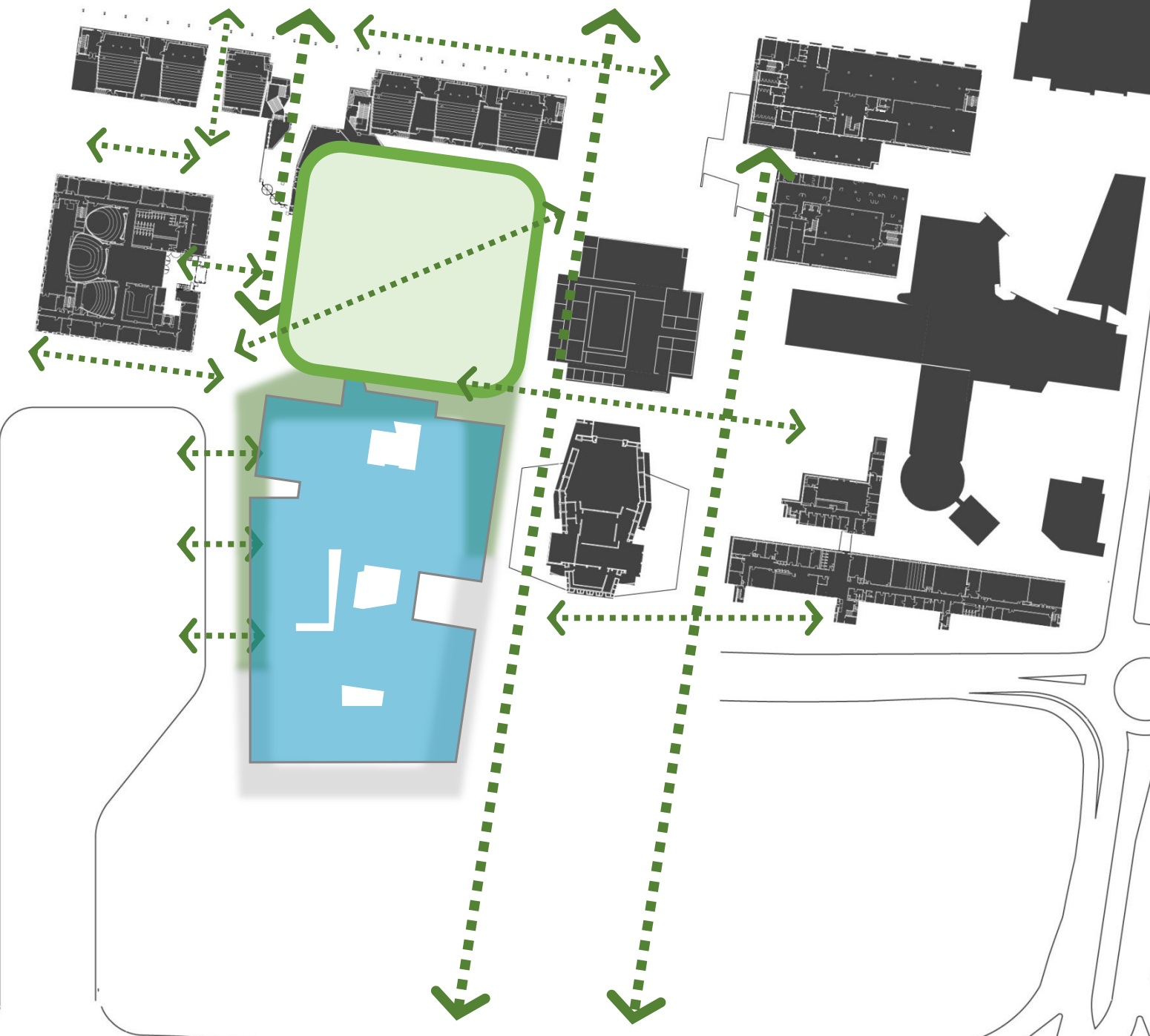




A Shift in Scale



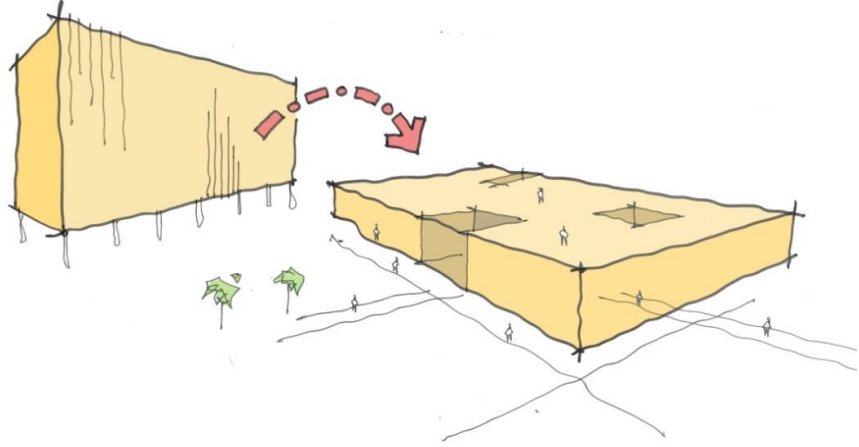
A Shift in Scale

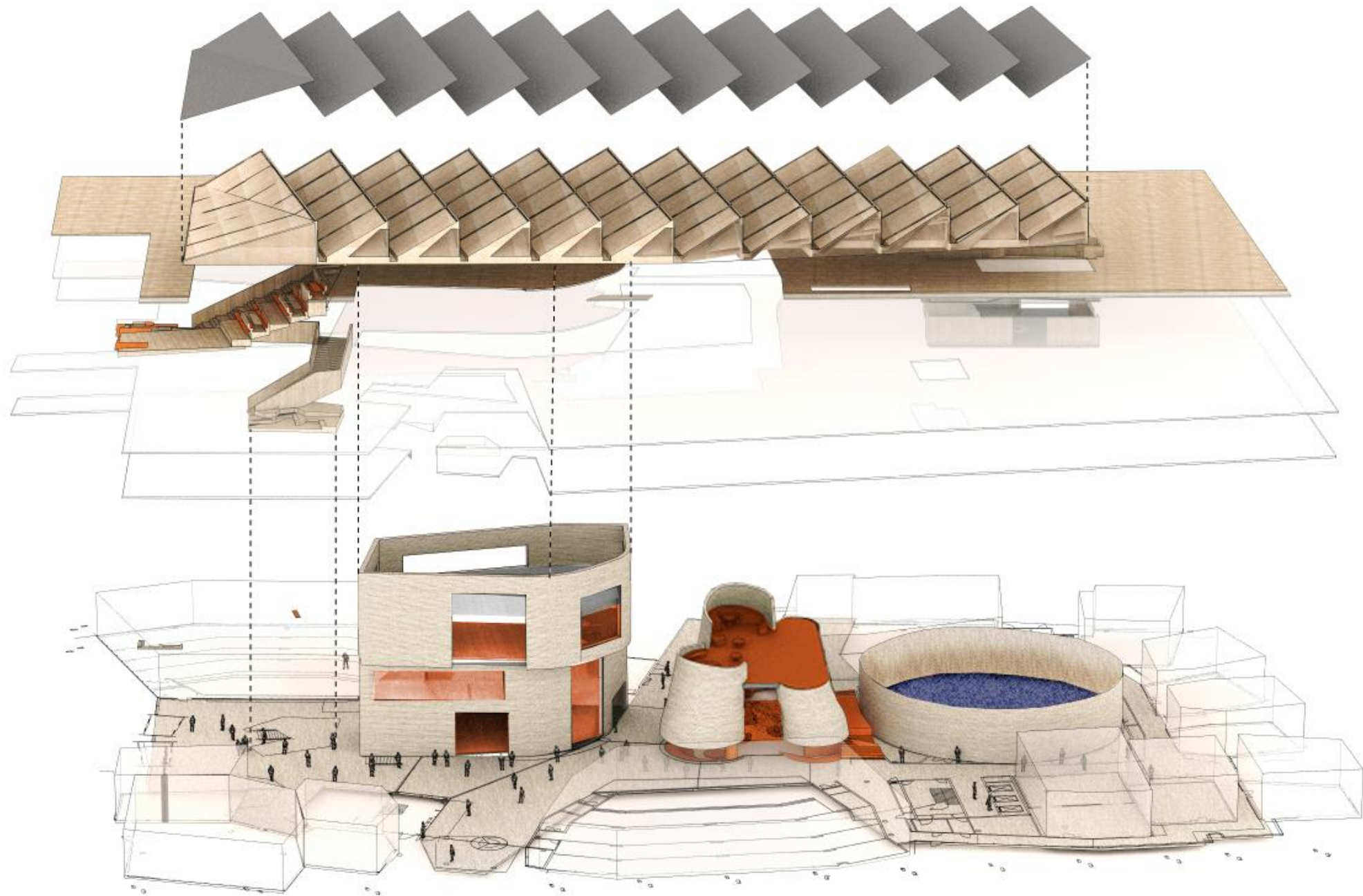




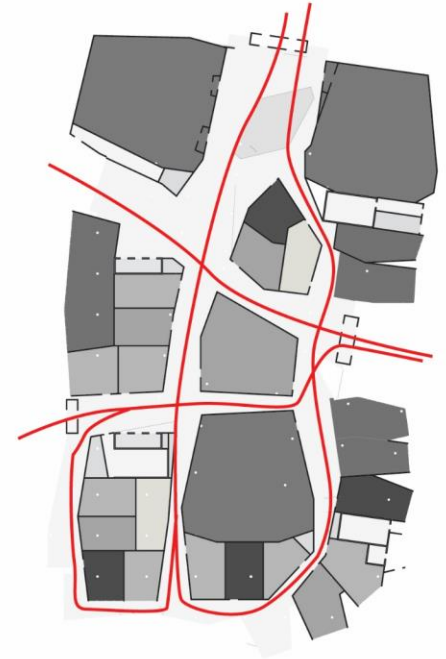
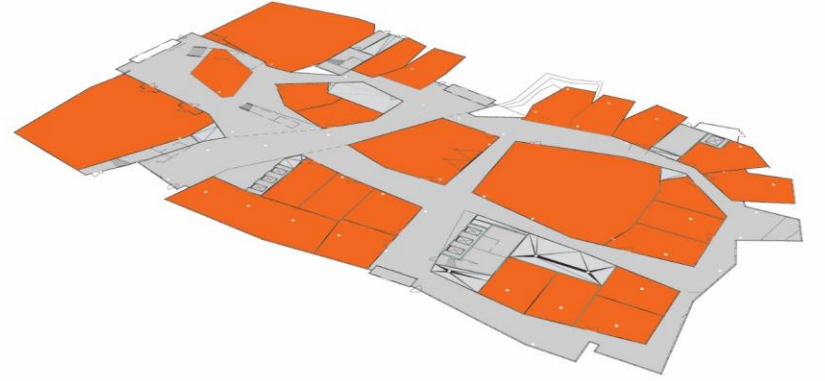
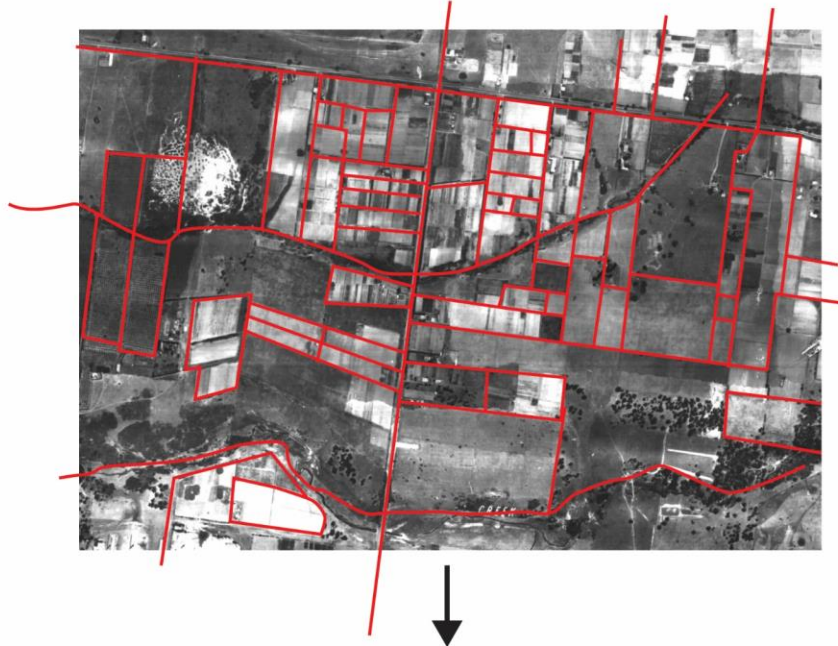
LTB Plaza lawn

A Mat Building

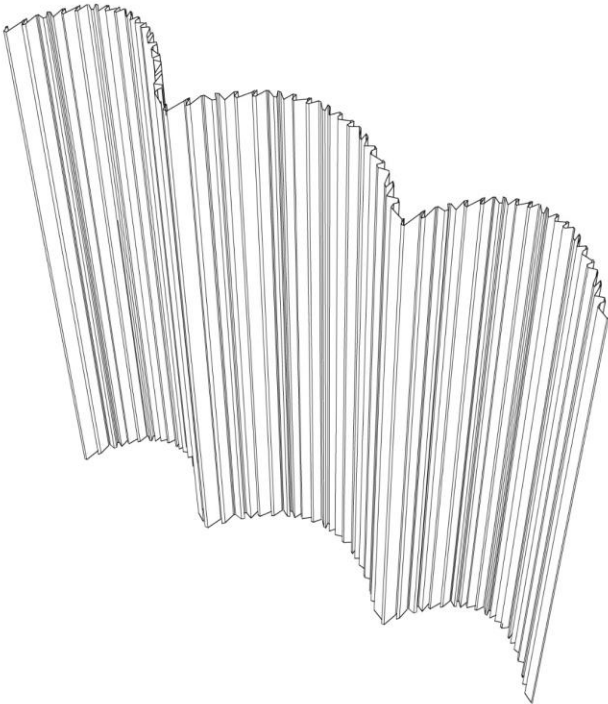
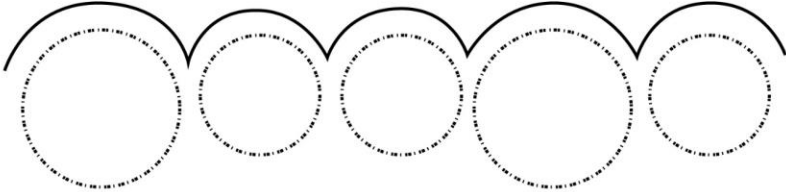
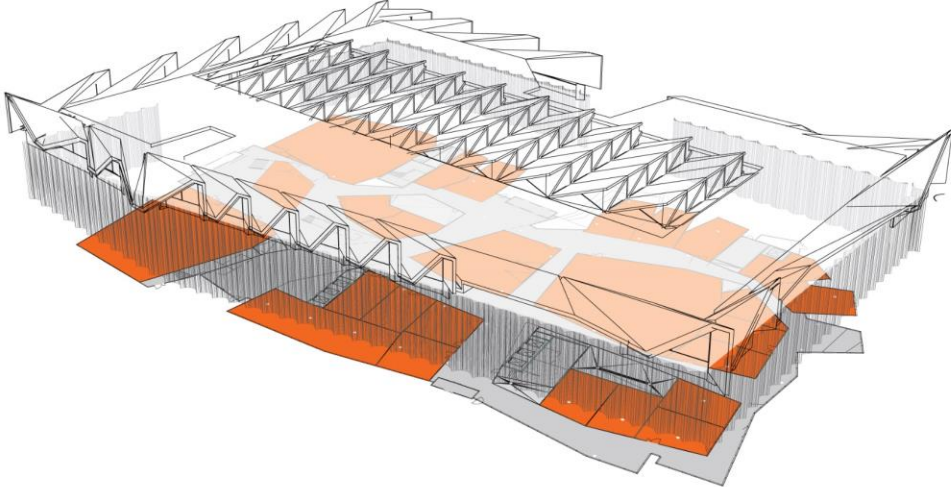




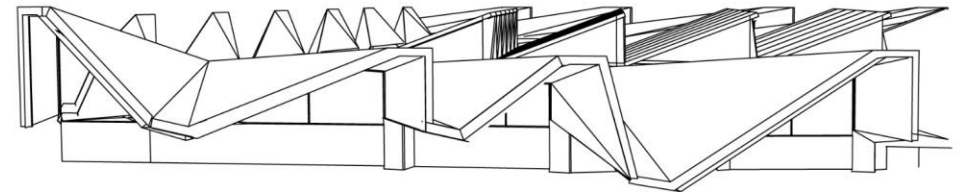
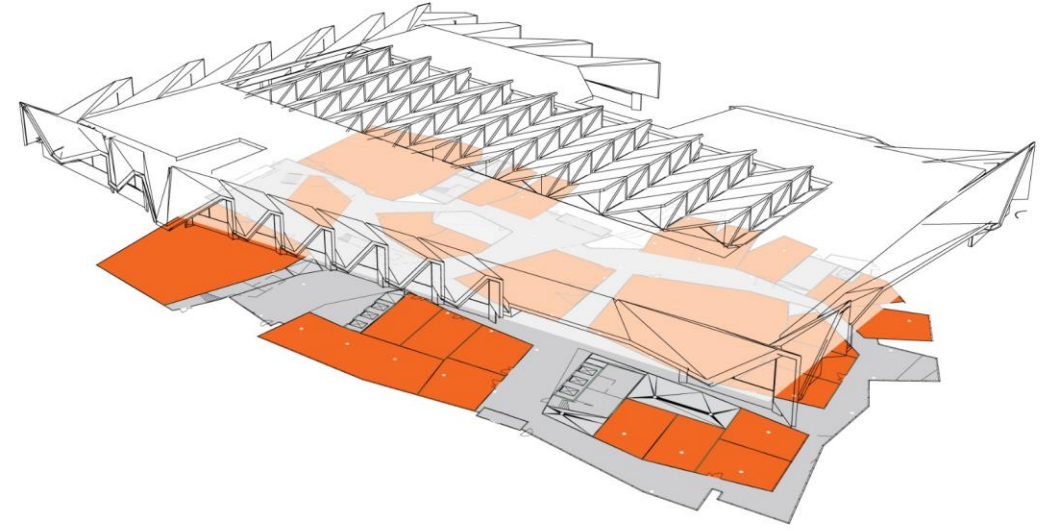
Field



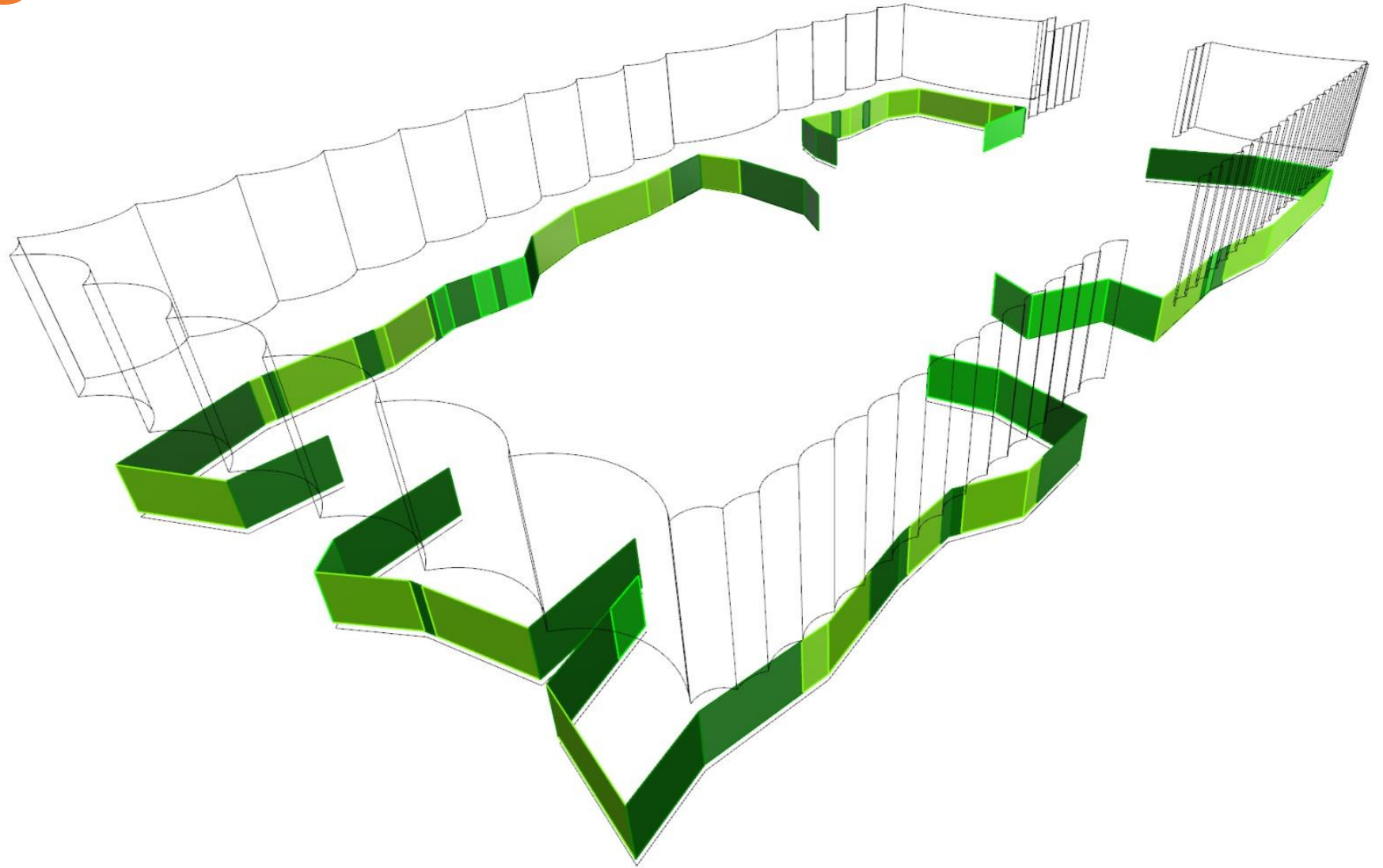
Forest



Roof Patterns



Growth Rings



Better Teaching, Better Learning Agenda

Better Teaching, Better Learning Agenda

A university wide strategy for the transformation of teaching & learning at Monash University:

- Student centred approach
- Challenge all aspects of teaching
- Blended learning

LTB as a step change in contemporary learning environments.

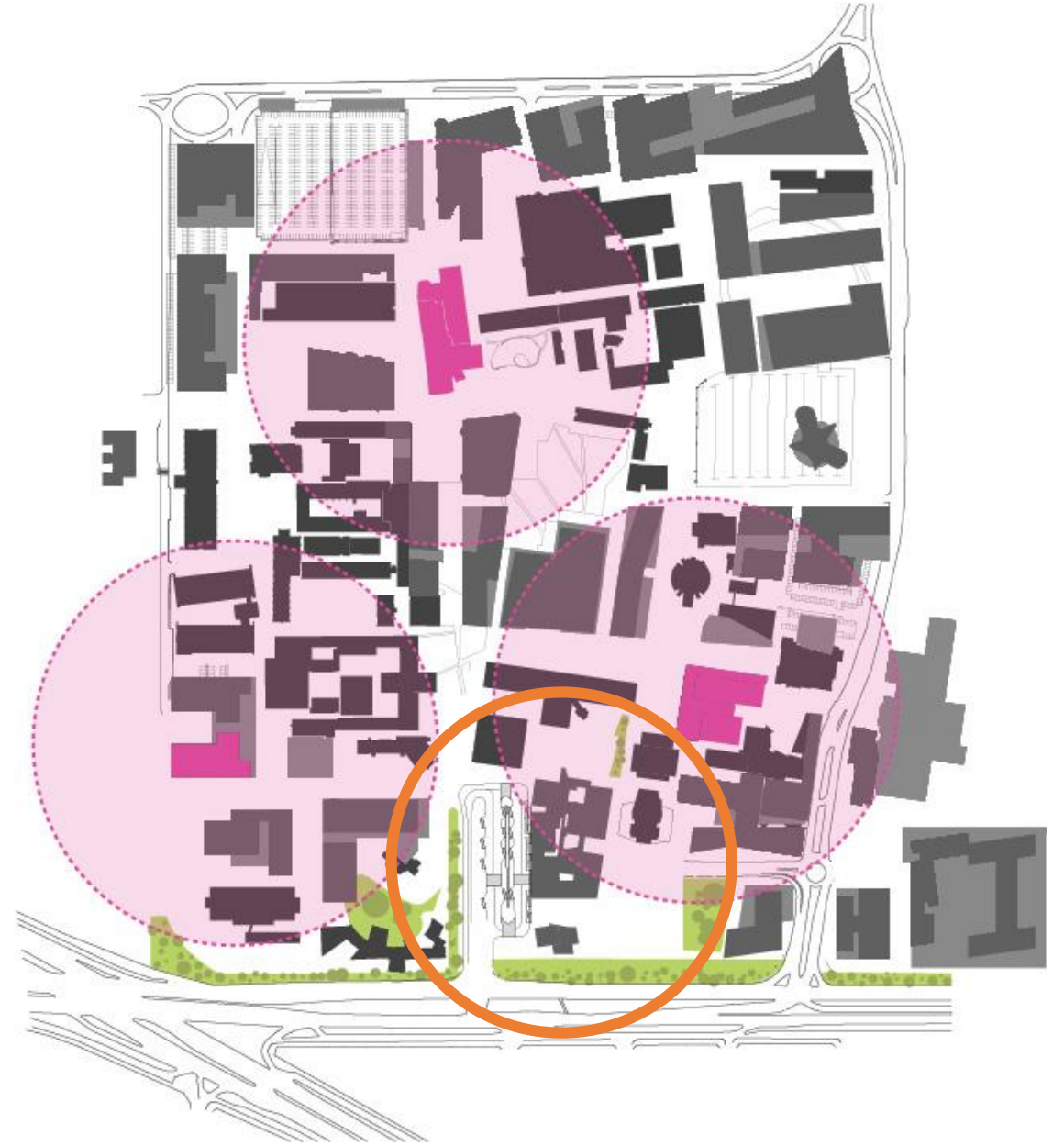
 MONASH University

Better Teaching, Better Learning Agenda

Office of the Vice-Provost (Learning and Teaching)

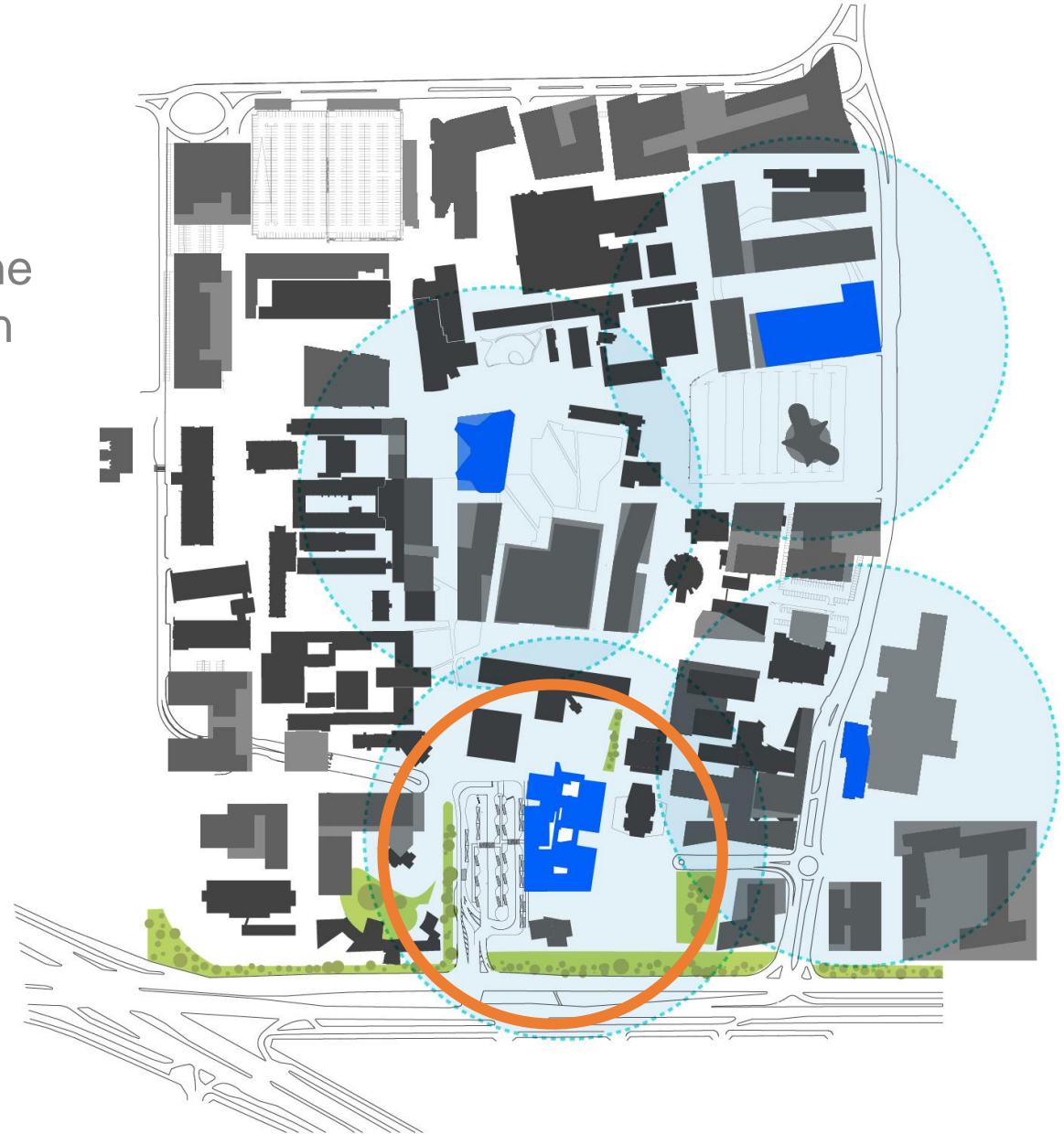
3 Libraries

- Managed study spaces
- Quiet focused work
- Assistance to access resources

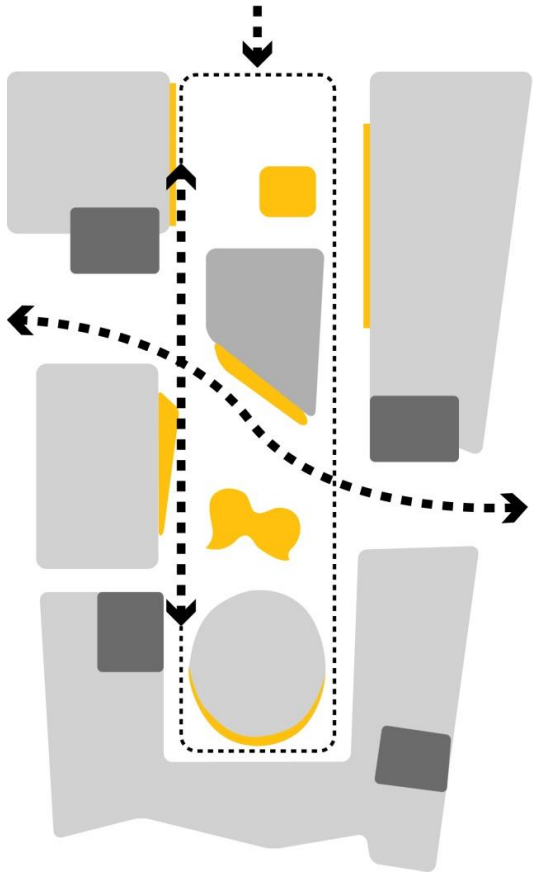


4 Learning Hubs

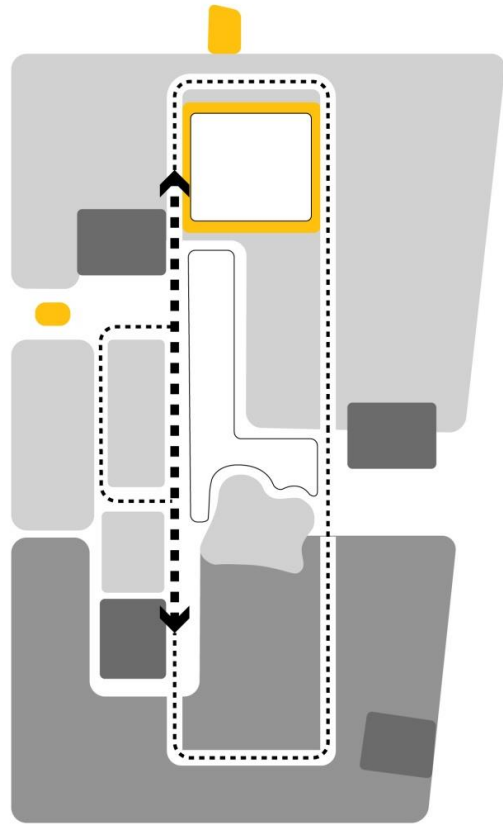
- > Over 70 formal learning spaces, and 800 informal learning seats
- > Centrally bookable general learning spaces - discipline specific or specialist teaching spaces will be provided in faculty buildings
- > Students will bring their own devices – BYOD – very few desktop computers will be provided in the building



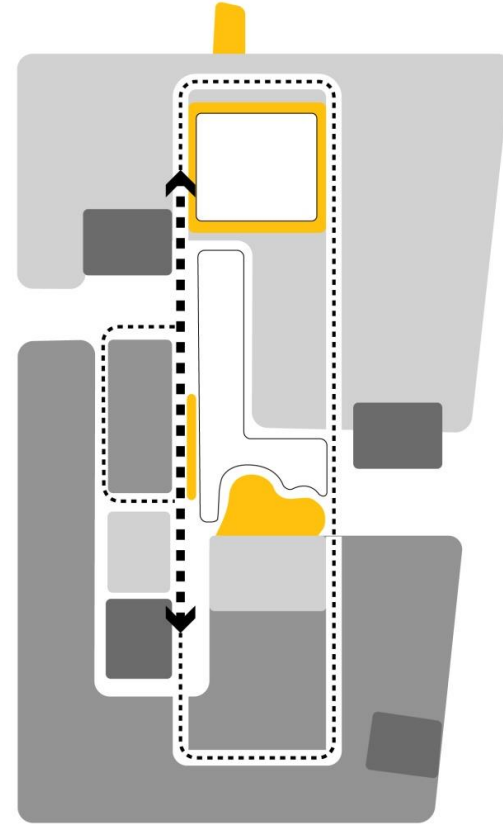
Program



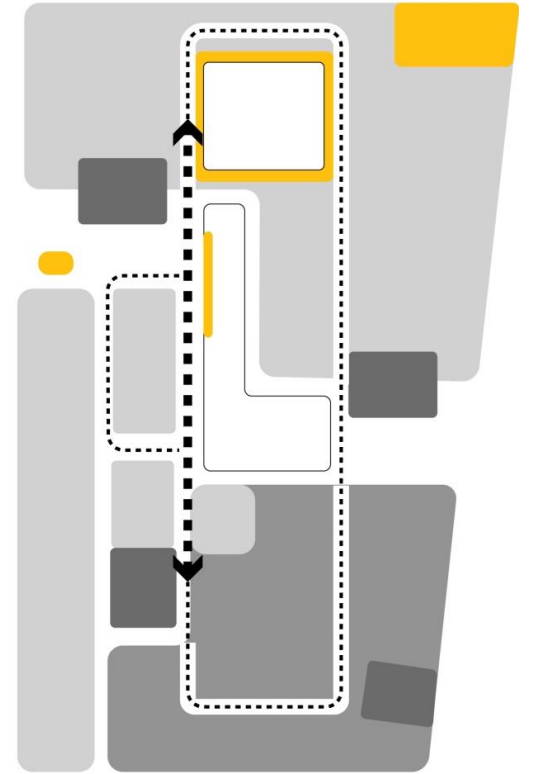
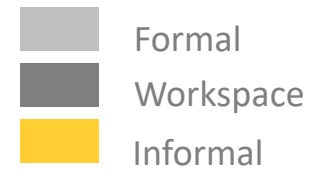
G



1



2



3

A Learning Landscape

A building of vast scale – how to bring distinction to this while also retaining flexibility?

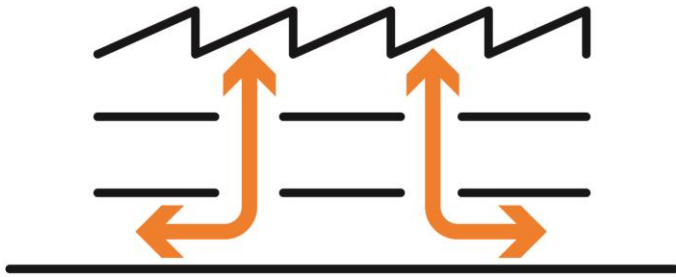
- > Ravine
- > Escarpment Stair
- > Treehouse
- > Lookout

Pre-class and post-class learning: the circulation spaces are distinctive and highly figured – the informal study seats are located here.

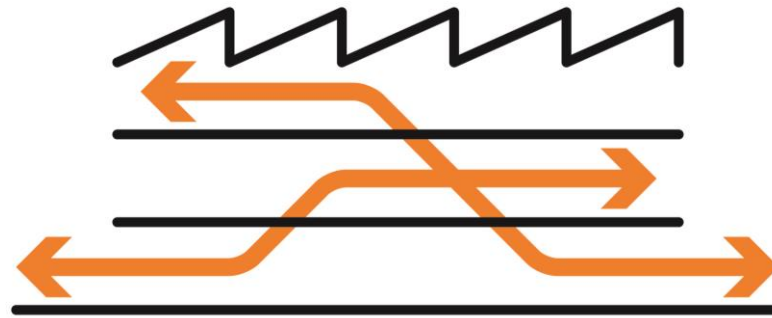
In class learning: the formal study spaces are located in more rational/flexible parts of the floorplate allowing change over time.

Pre-Class & Post- Class Learning (Informal)

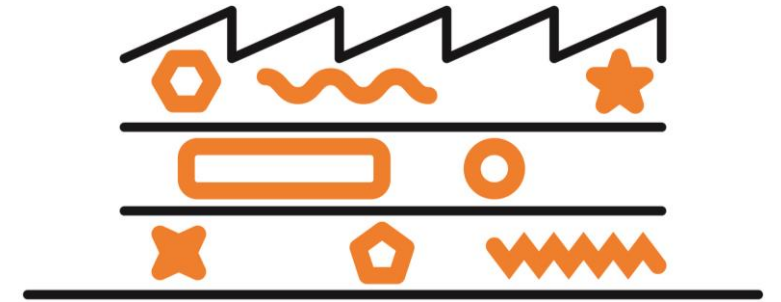
Organizing Principles



A porous center



A campus within a campus

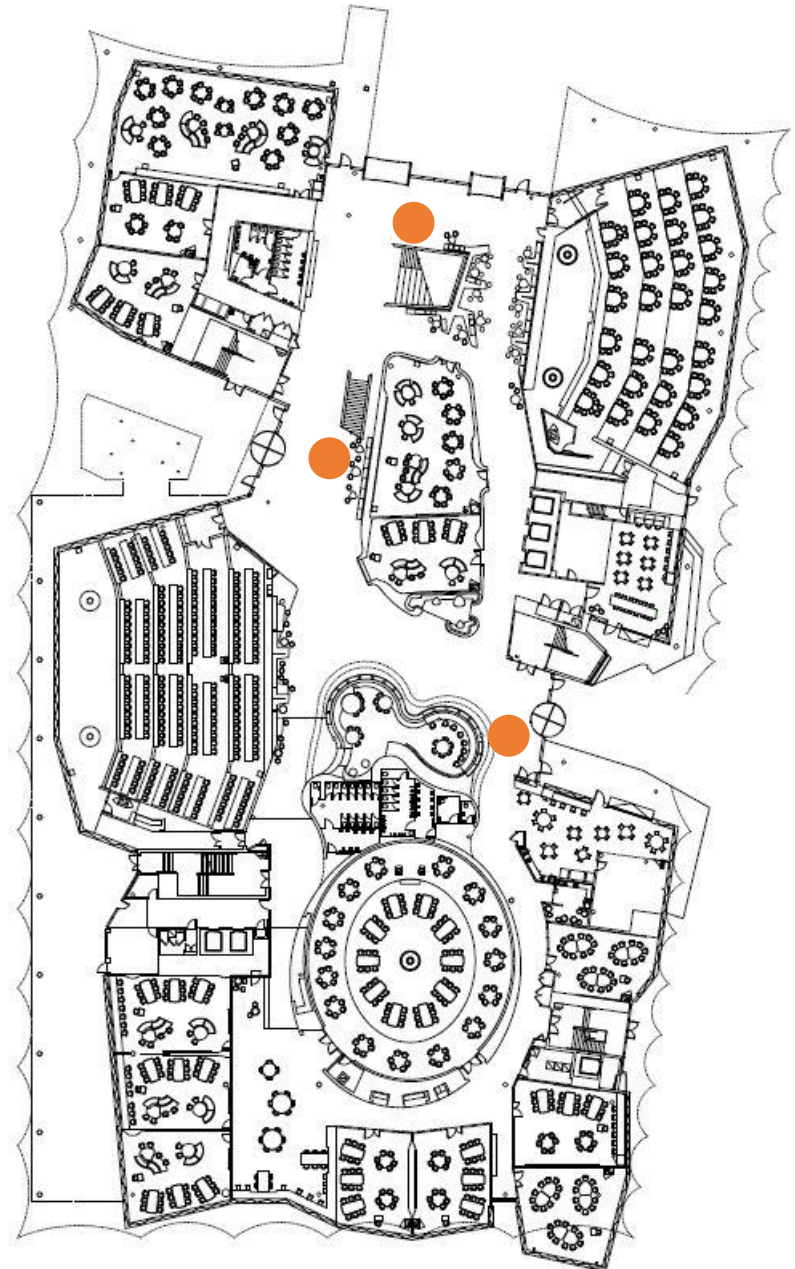
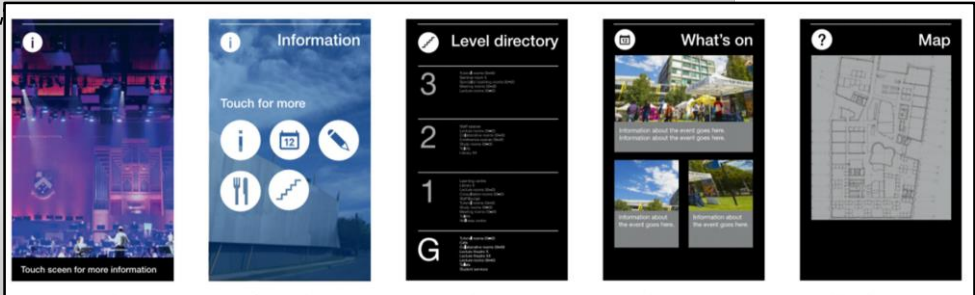


A cabinet of curiosities

An Active Ground Plane

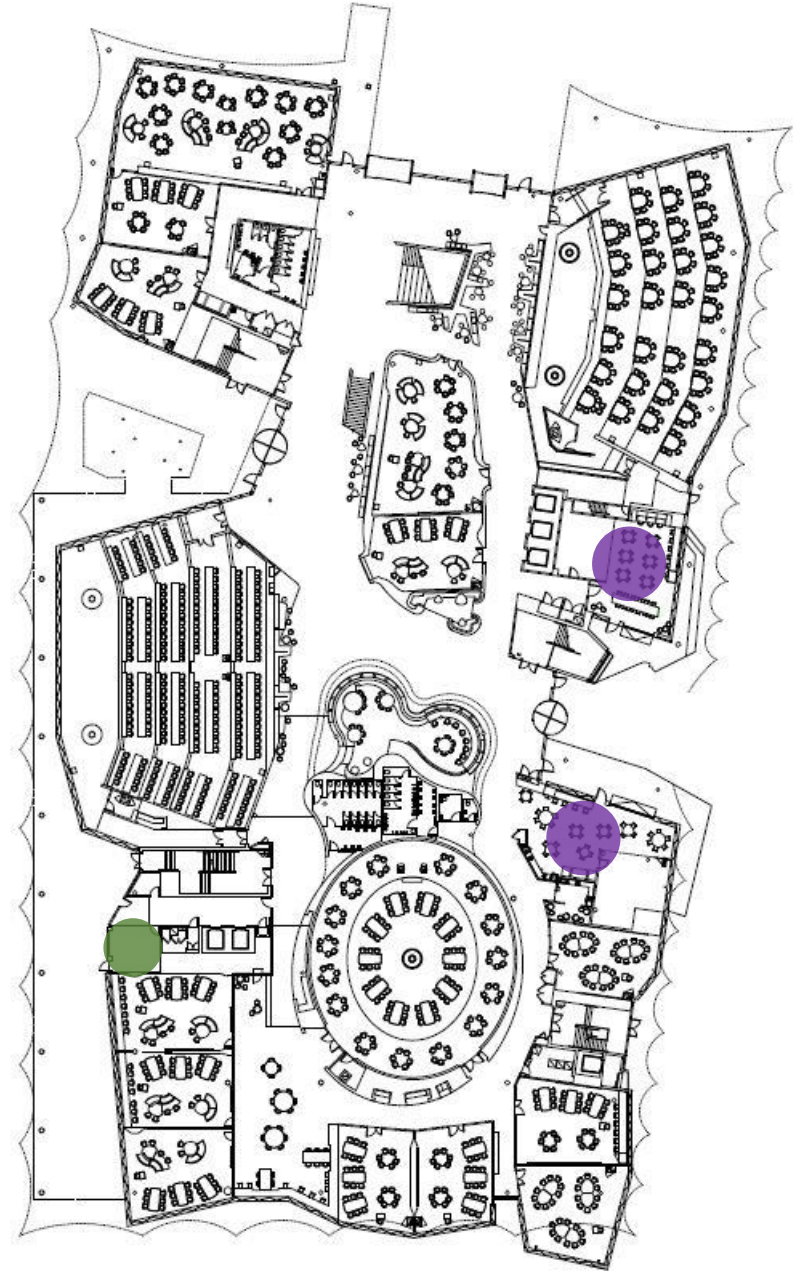


Signage Totems



Retail

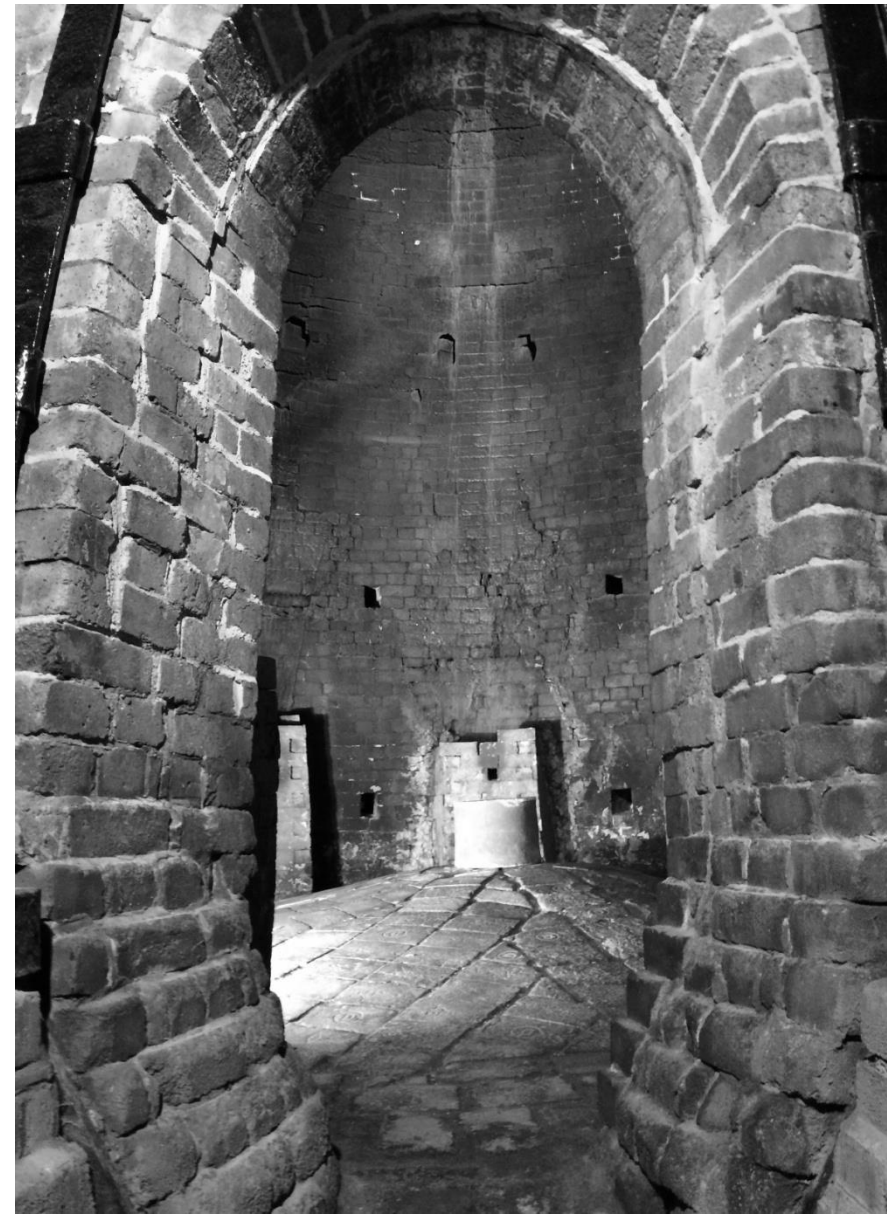
- Retail – Food & Beverage
- Retail – Coffee / Convenience

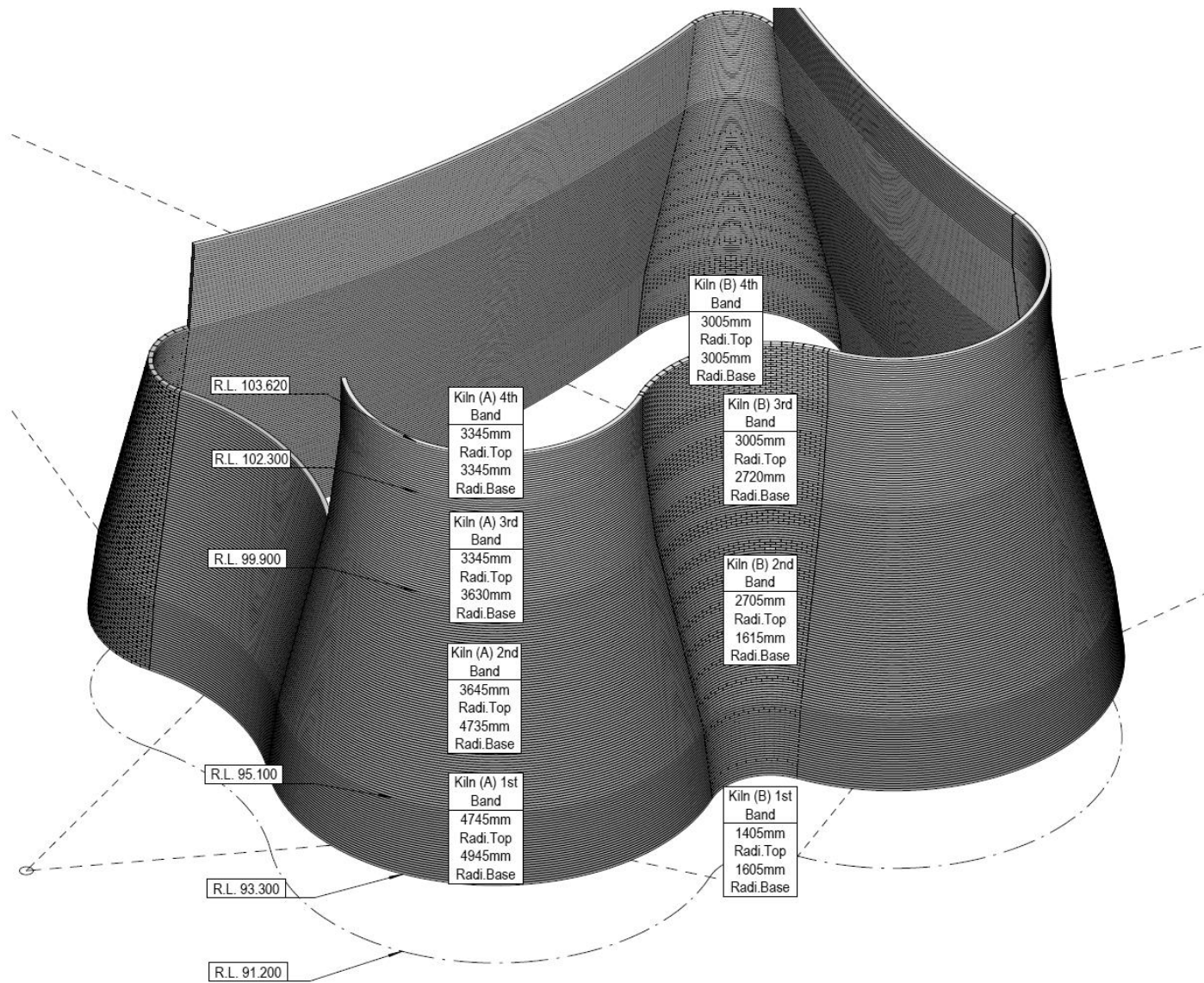


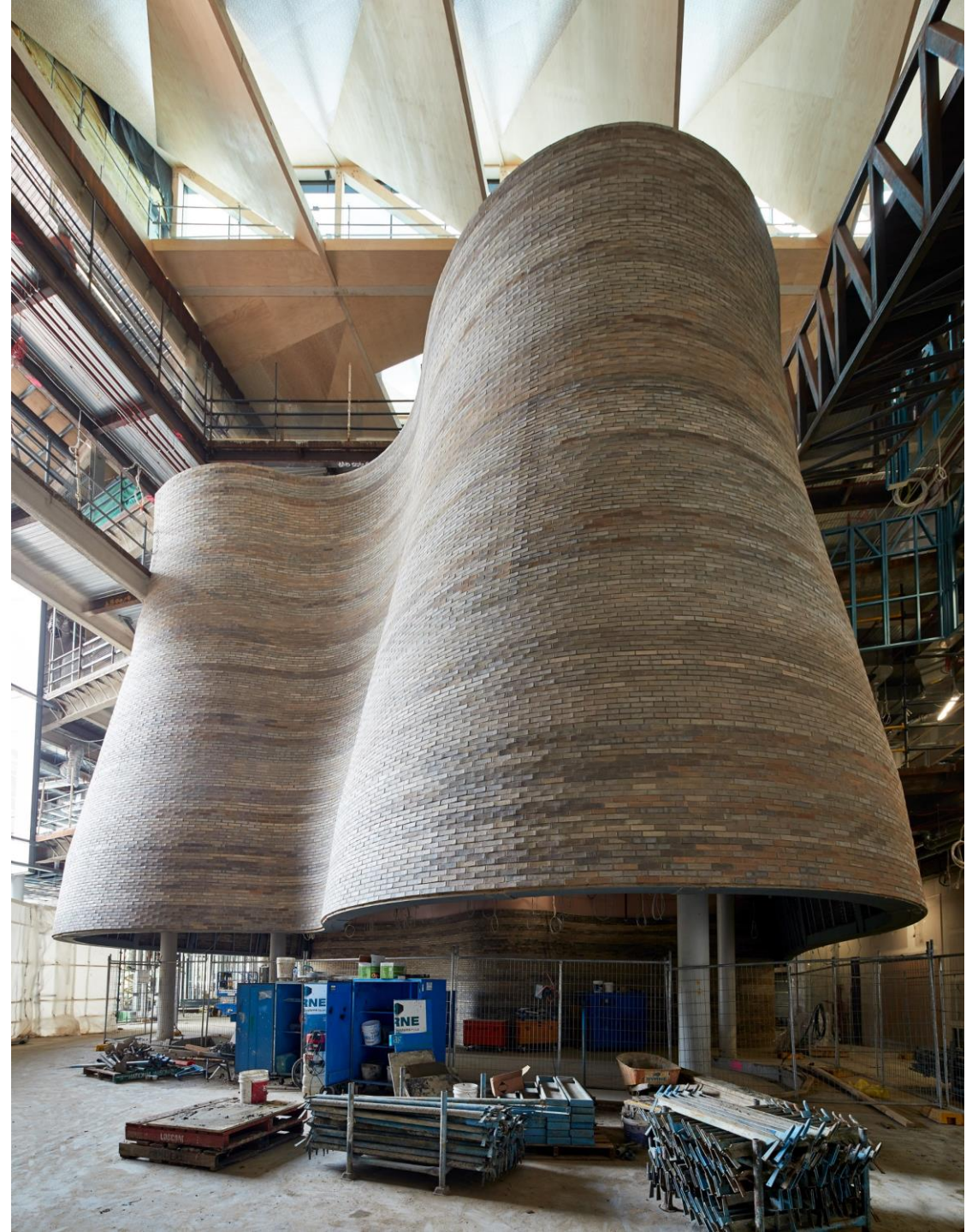
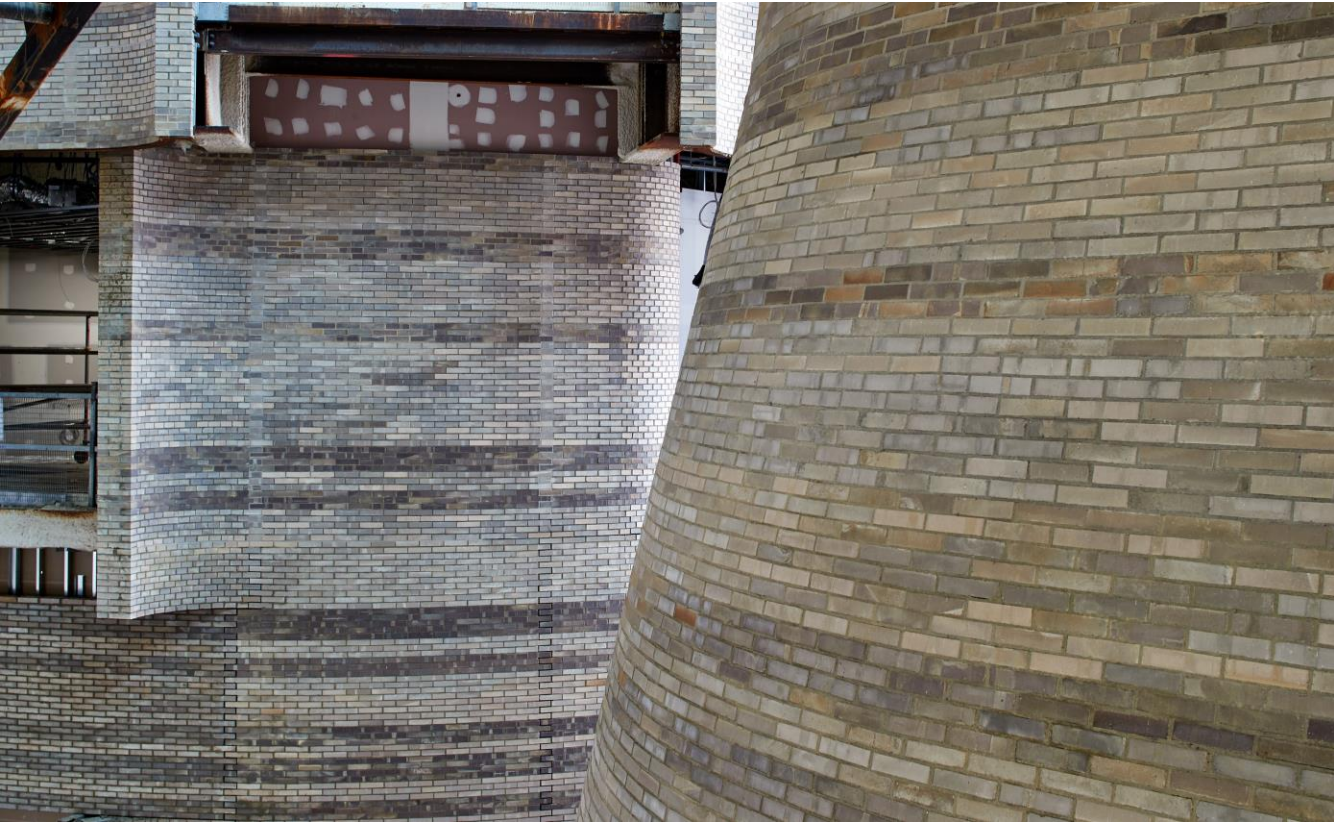




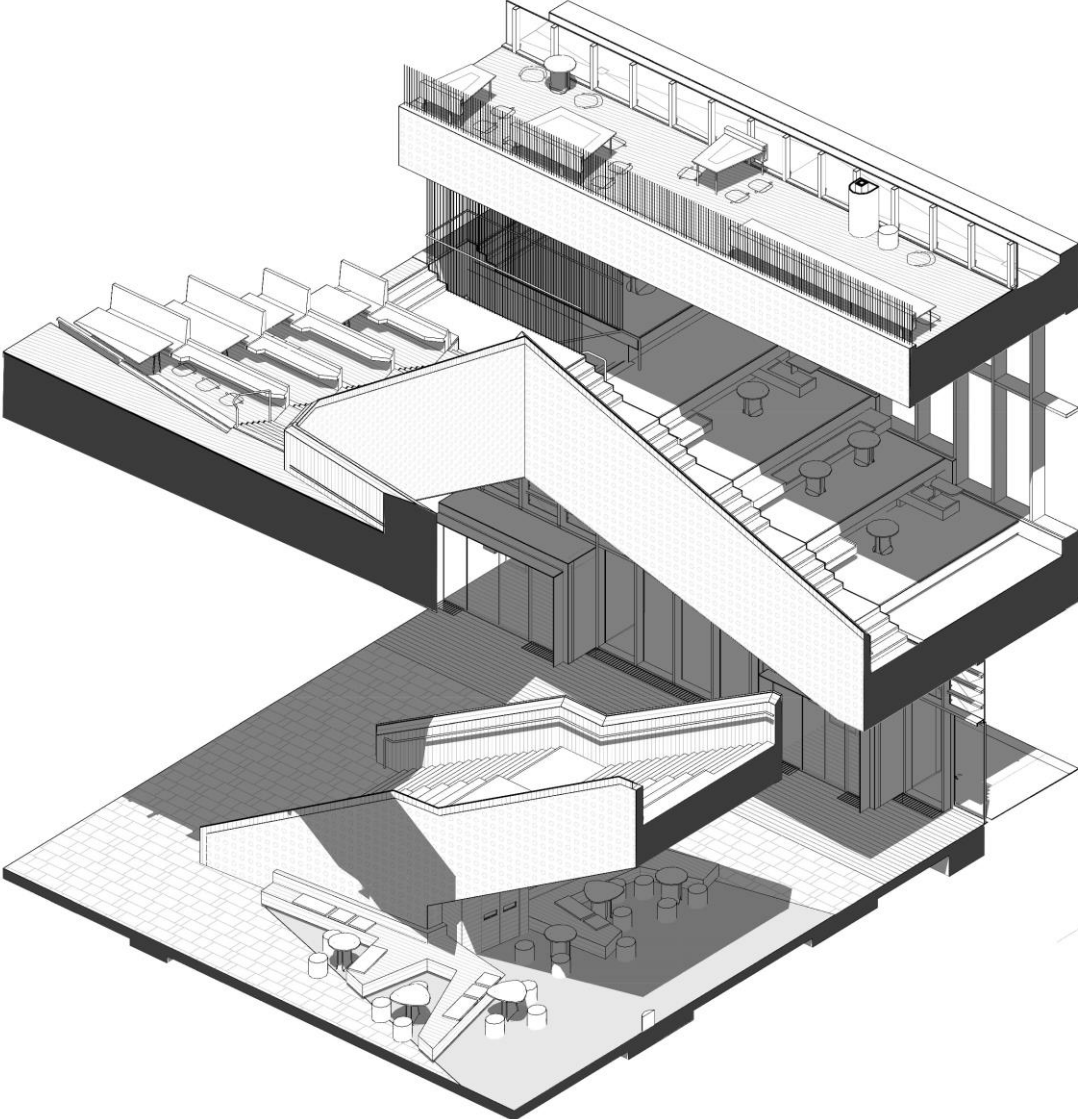








Escarpment Stair









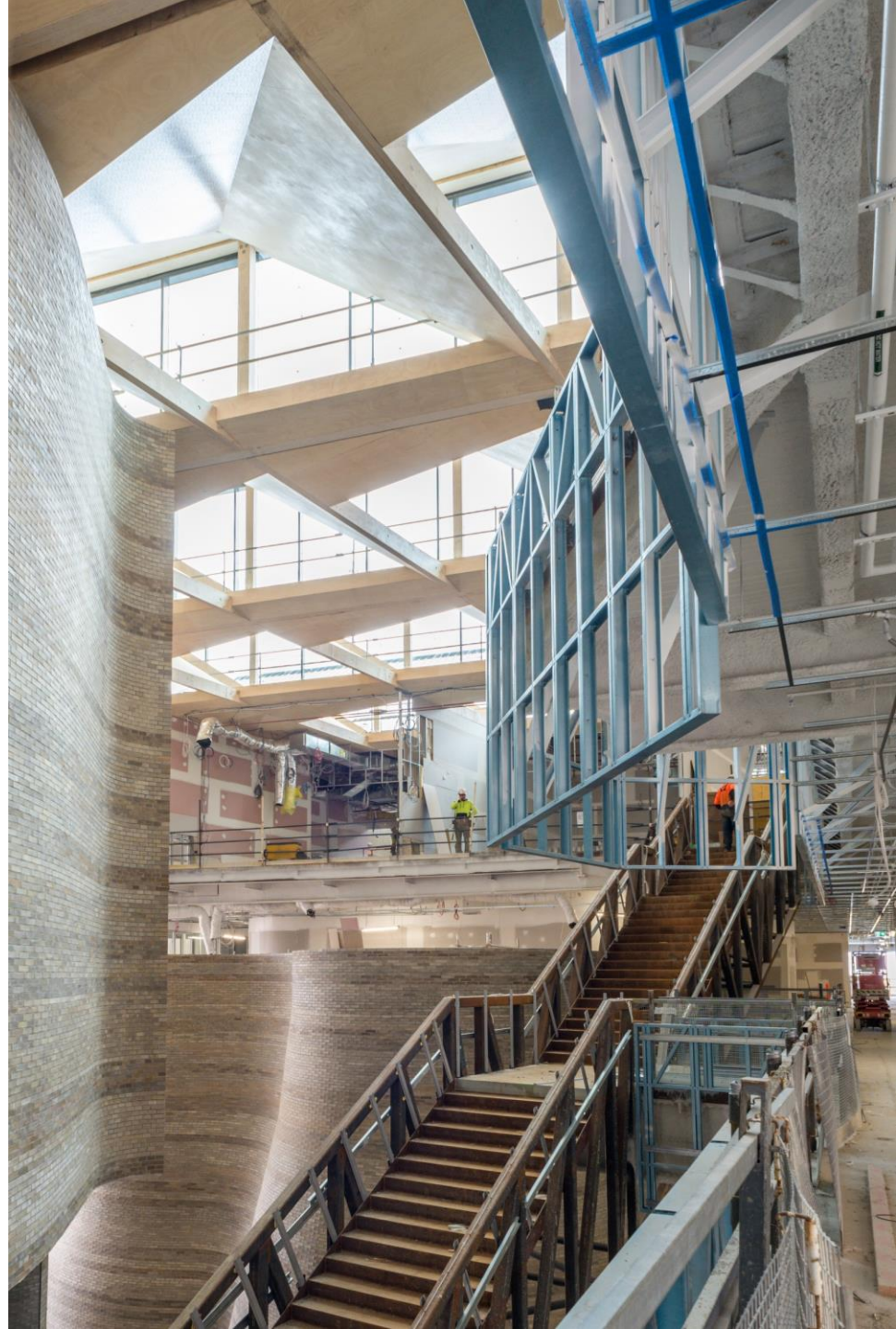




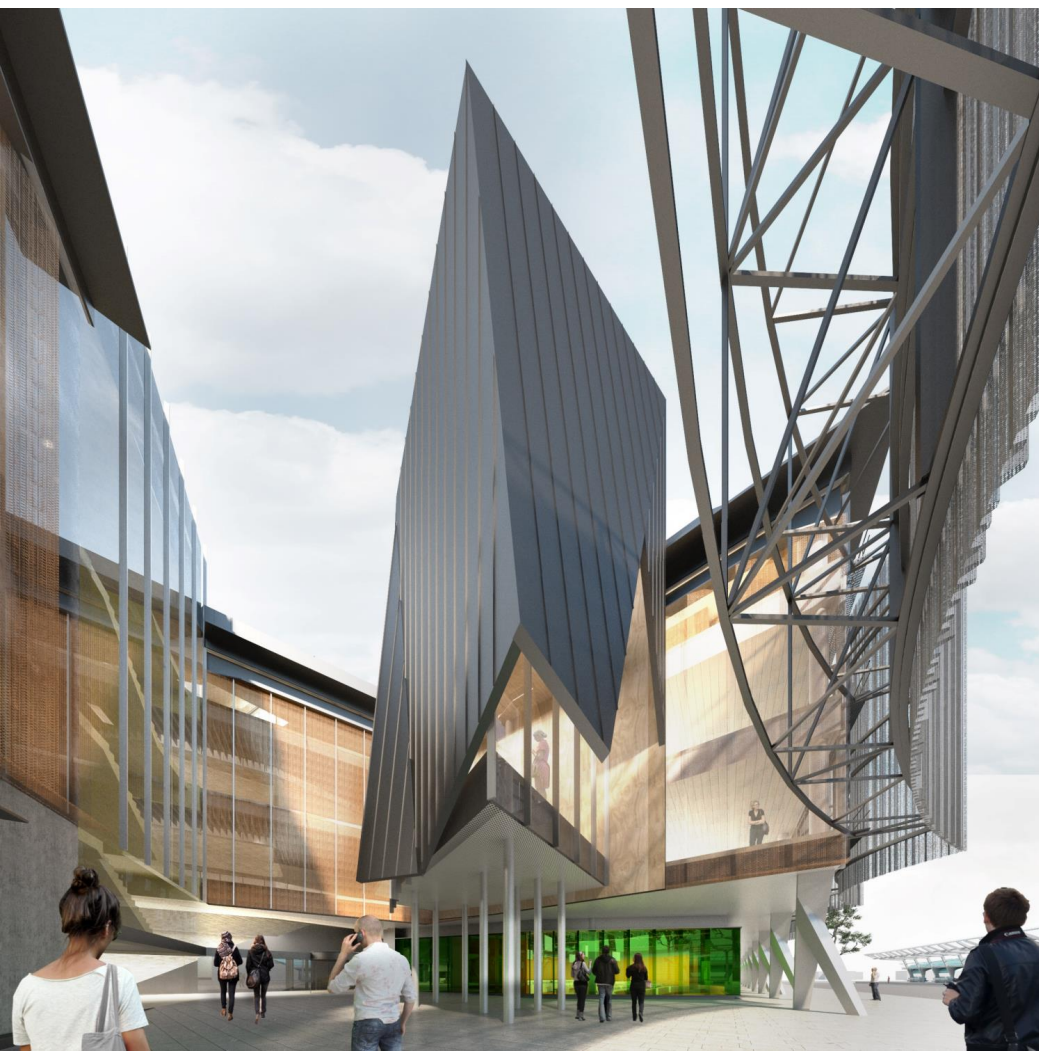


Spine Stair





Tree House

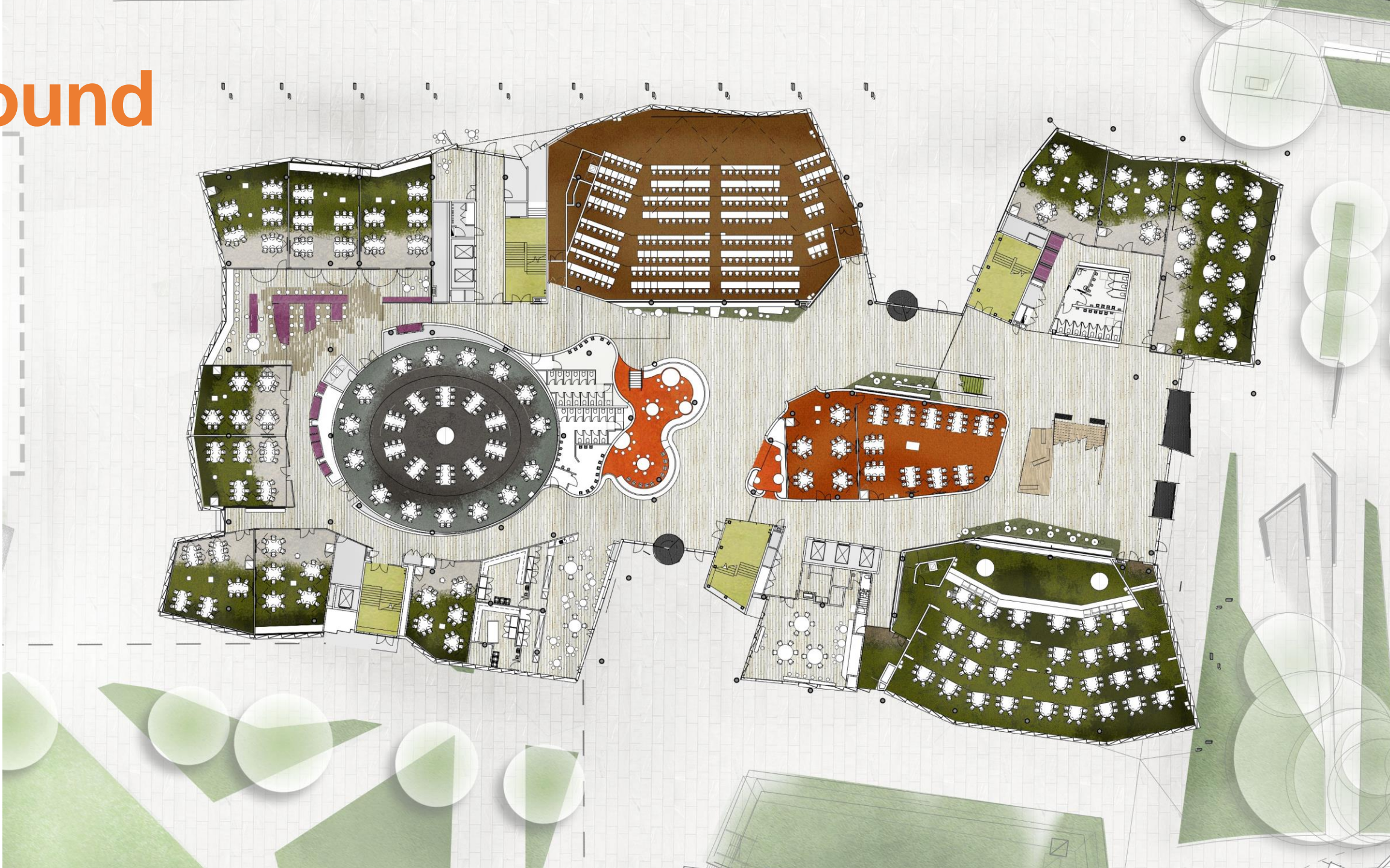


Lookout



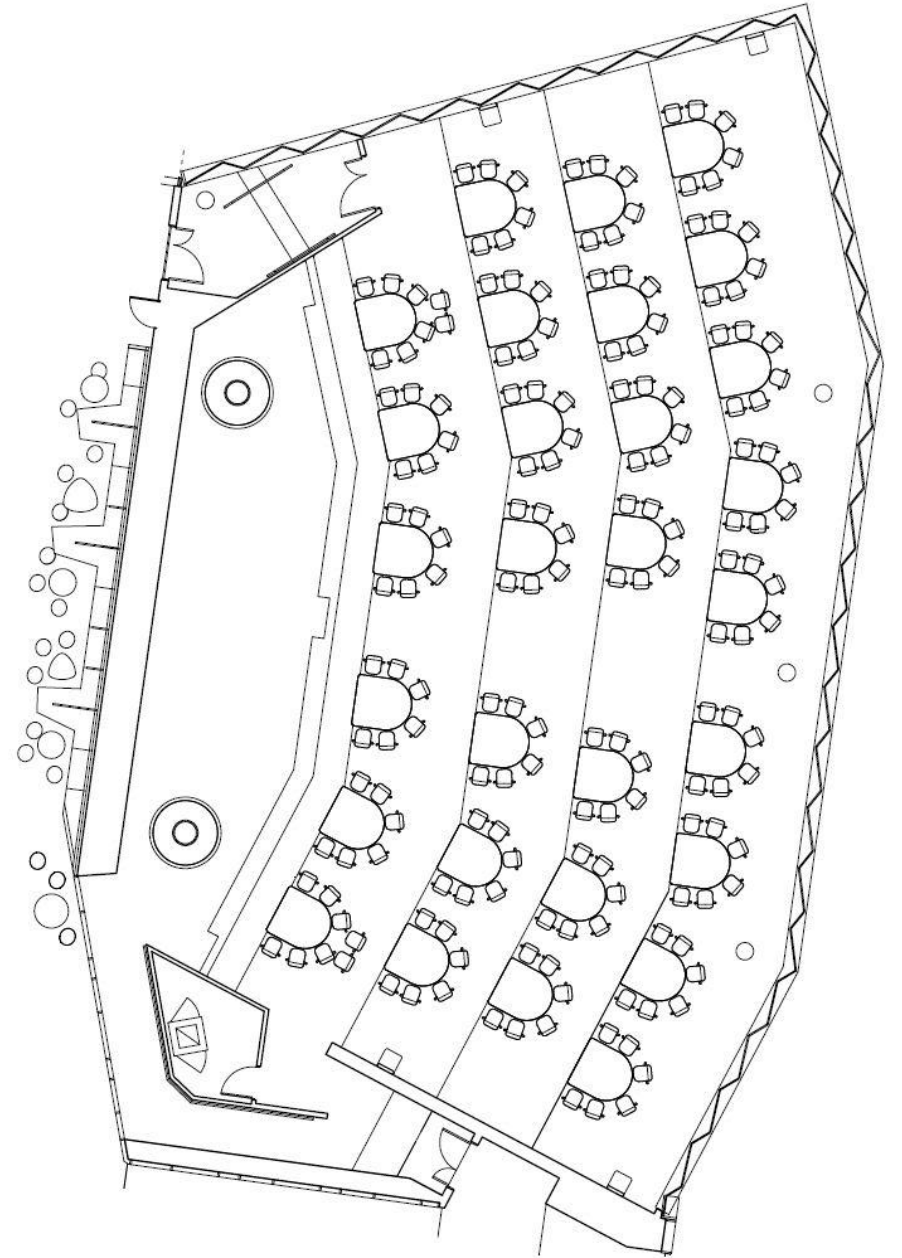
In-Class Learning (Formal Learning)

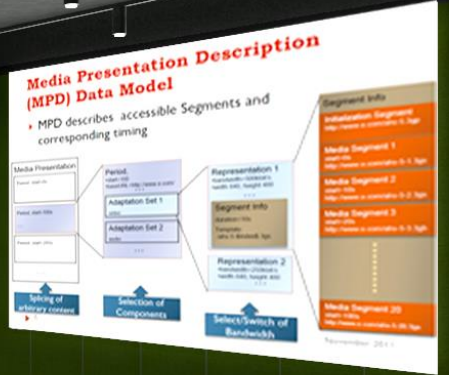
Ground



Collaborative Theatre

- 184 Seats
- Map tables with camera capture of writeable surfaces
- Display screens to front & back of room
- Glazing to rear of theatre





Handwritten notes on a table:

MPD describes accessible Segments and corresponding timing

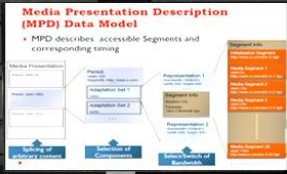
MPD describes accessible Segments and corresponding timing

Handwritten notes on a table:

MPD describes accessible Segments and corresponding timing

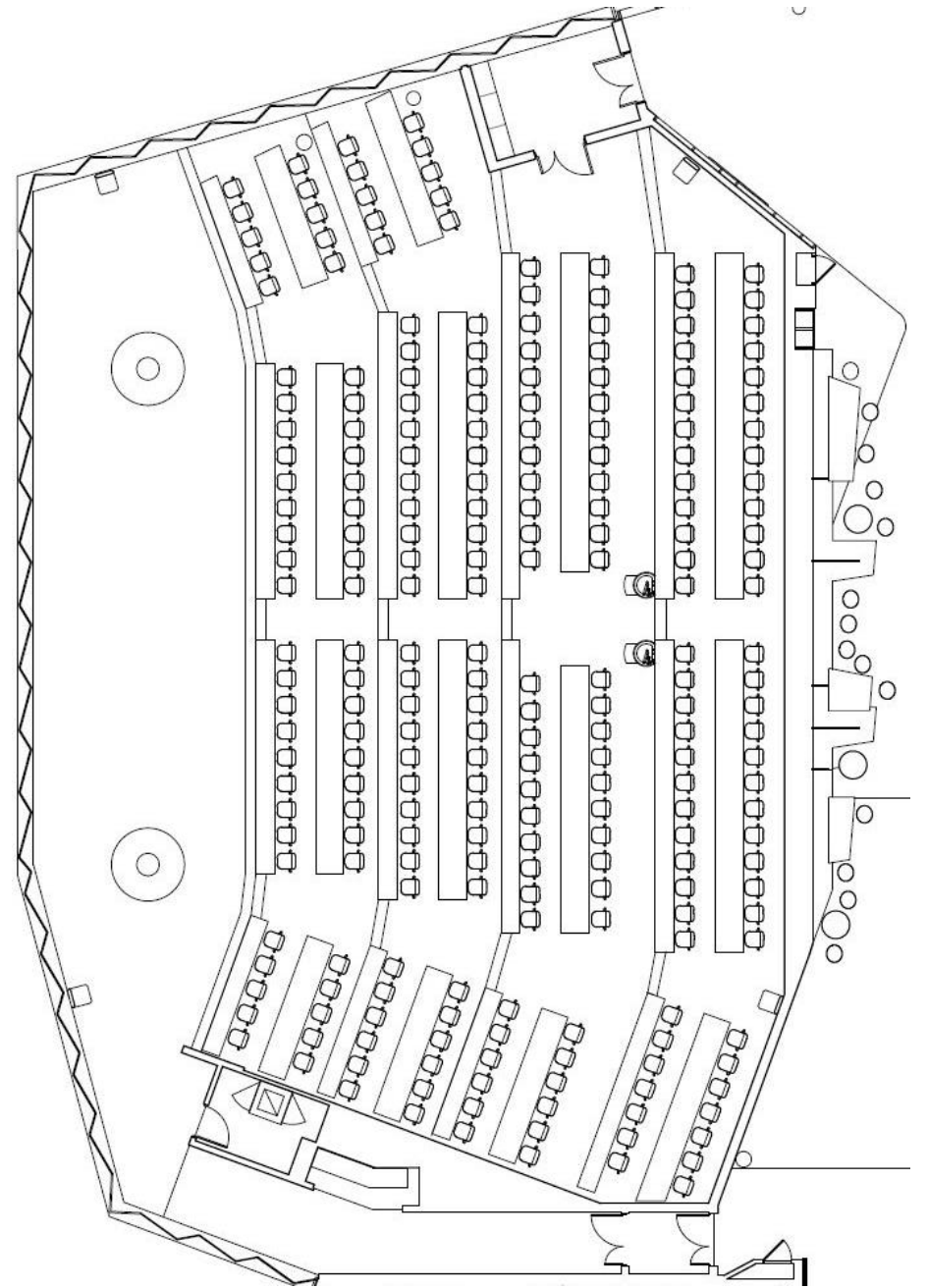
MPD describes accessible Segments and corresponding timing

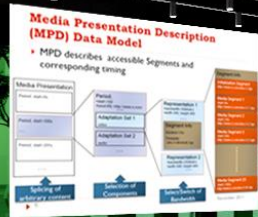
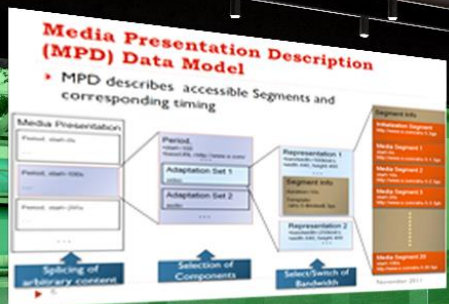
Note how all of them use it



Interactive Theatre

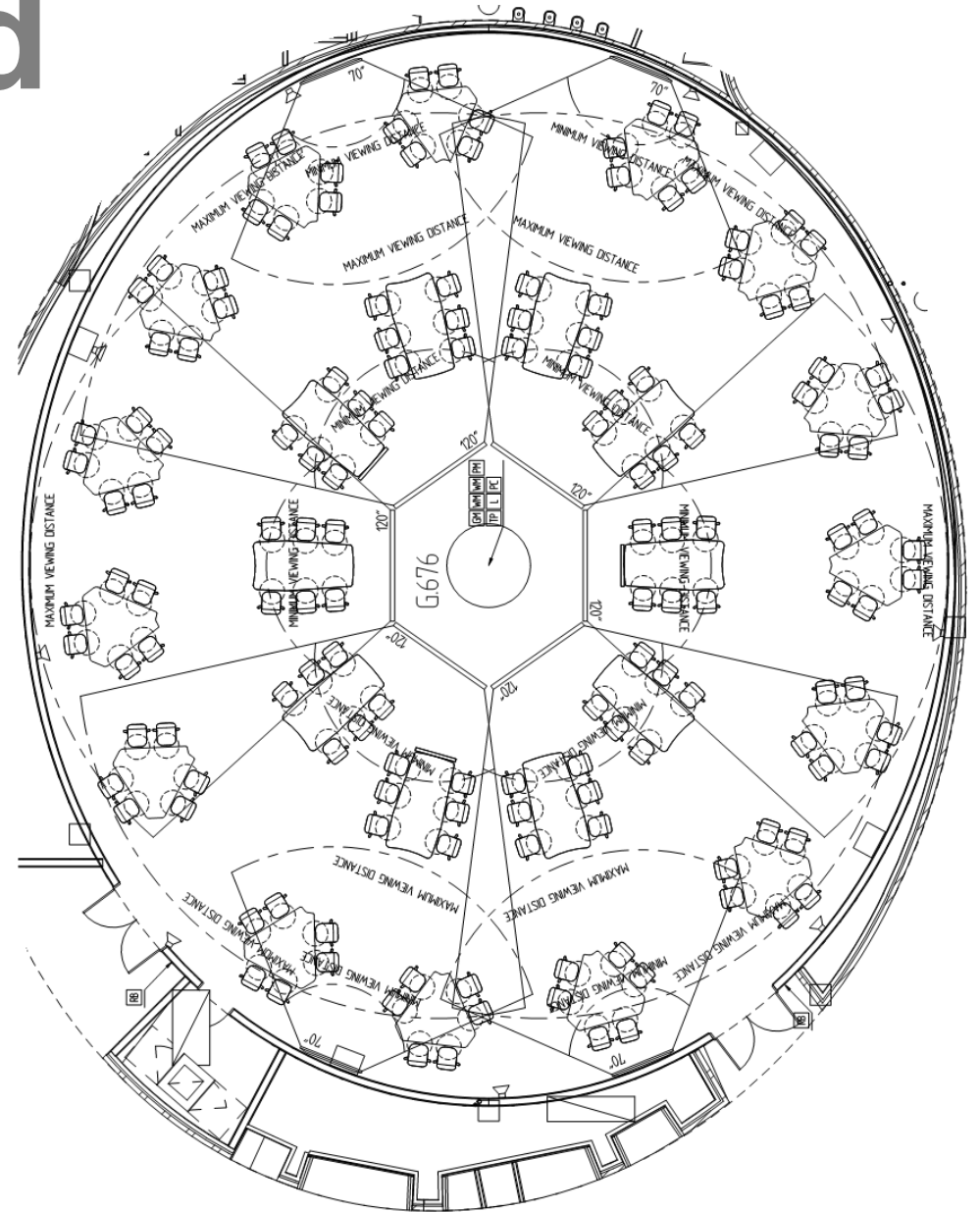
- 240 Seats
- Glazing to front of theatre with drop-down display
- Map tables with camera capture of writeable surface





Theatre in the Round

- 150 Seats
- Continuous writeable surface to perimeter
- Map table with writeable surface & AV
- Camera capture to all writeable surfaces
- Multiple presentation points





Level 1

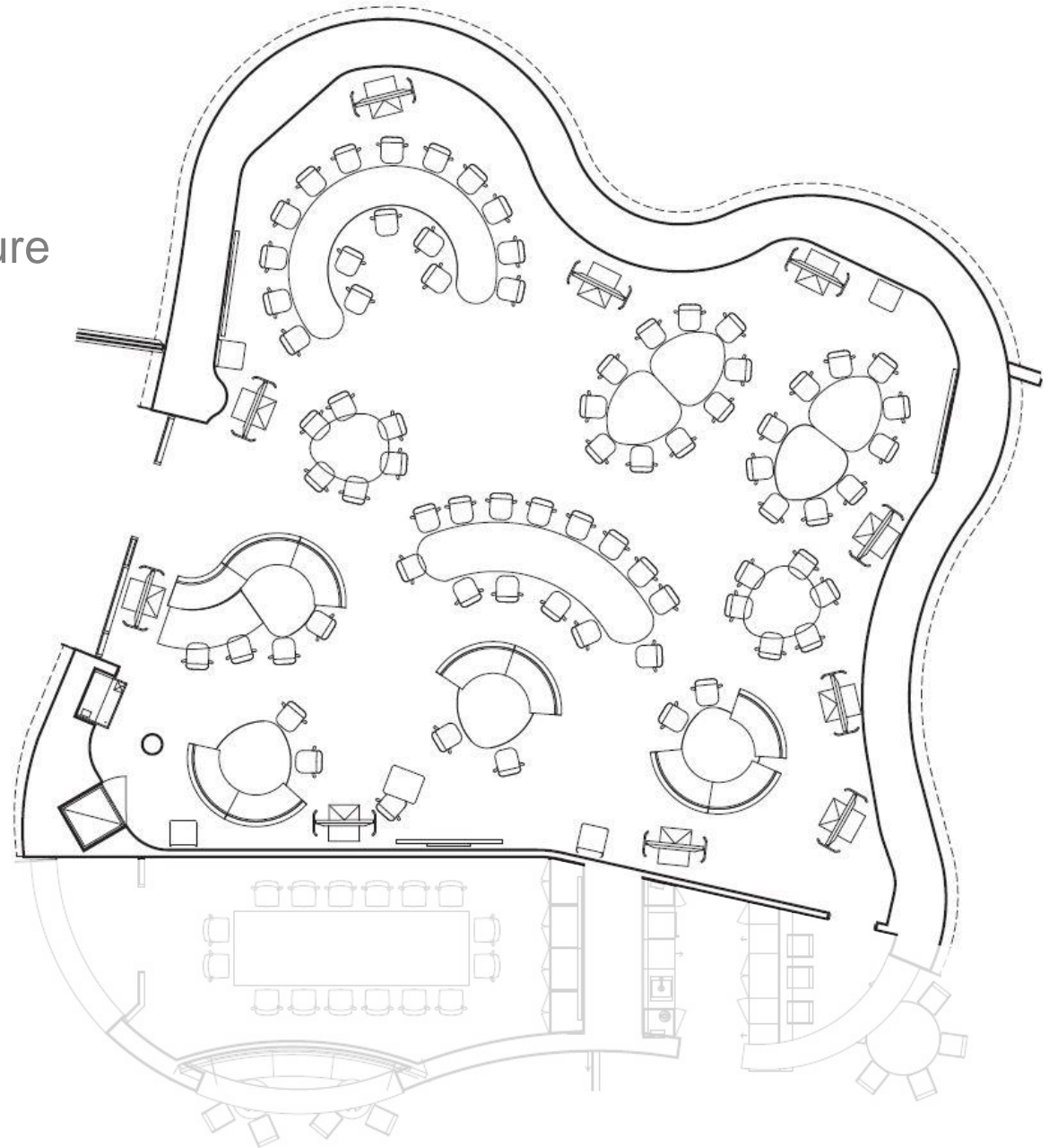


Level 2



Lectorial

- 100 Seats
- Writeable surface to perimeter with camera capture
- Varied furniture settings
- Combination of fixed & loose display screens





Media Presentation Description (MPD) Data Model

- MPD describes accessible Segments and corresponding timing

Media Presentation Description (MPD) Data Model

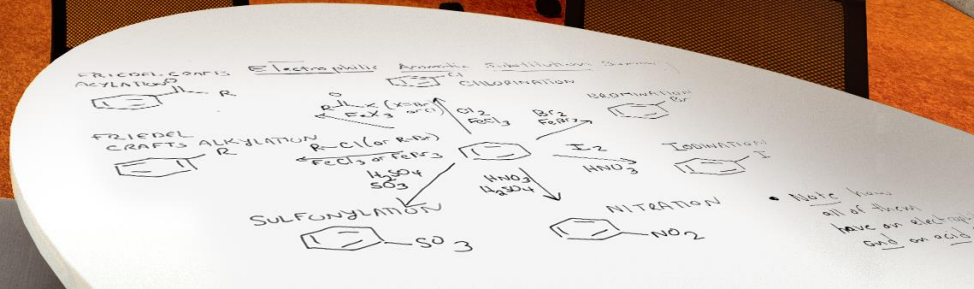
- MPD describes accessible Segments and corresponding timing

Media Presentation Description (MPD) Data Model

- MPD describes accessible Segments and corresponding timing

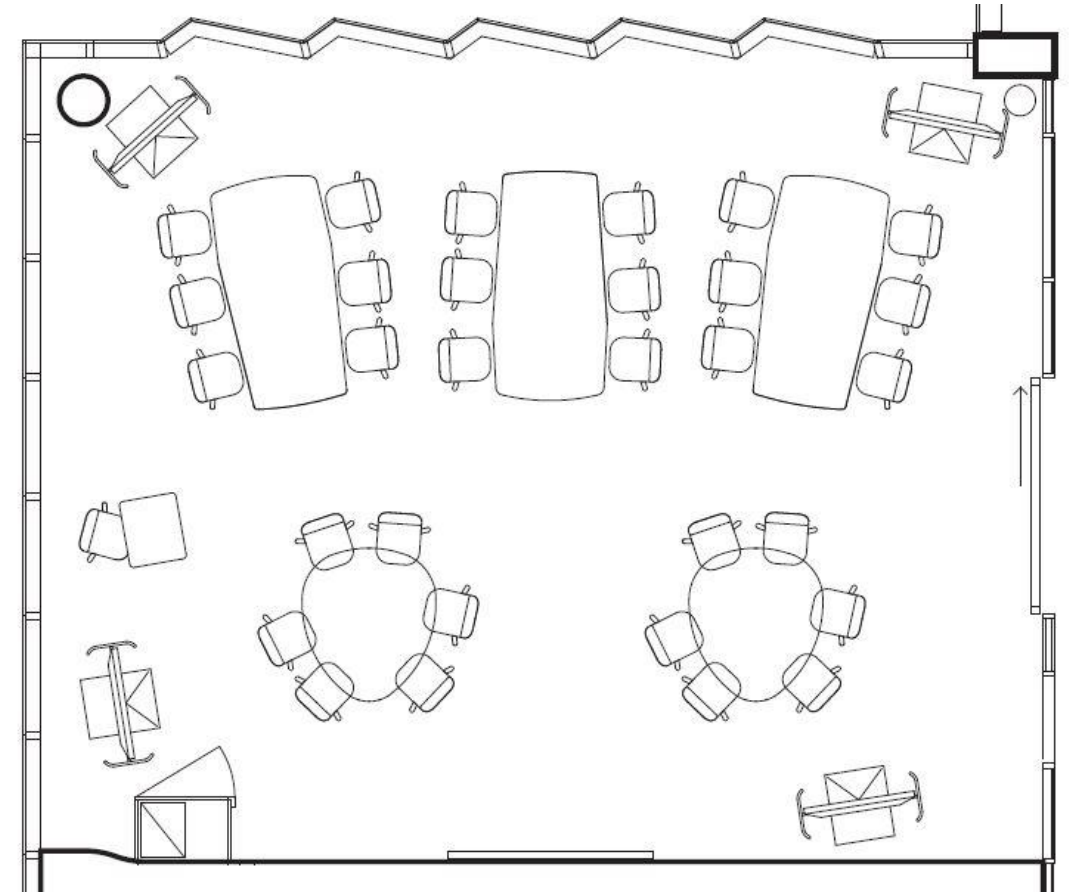
Media Presentation Description (MPD) Data Model

- MPD describes accessible Segments and corresponding timing



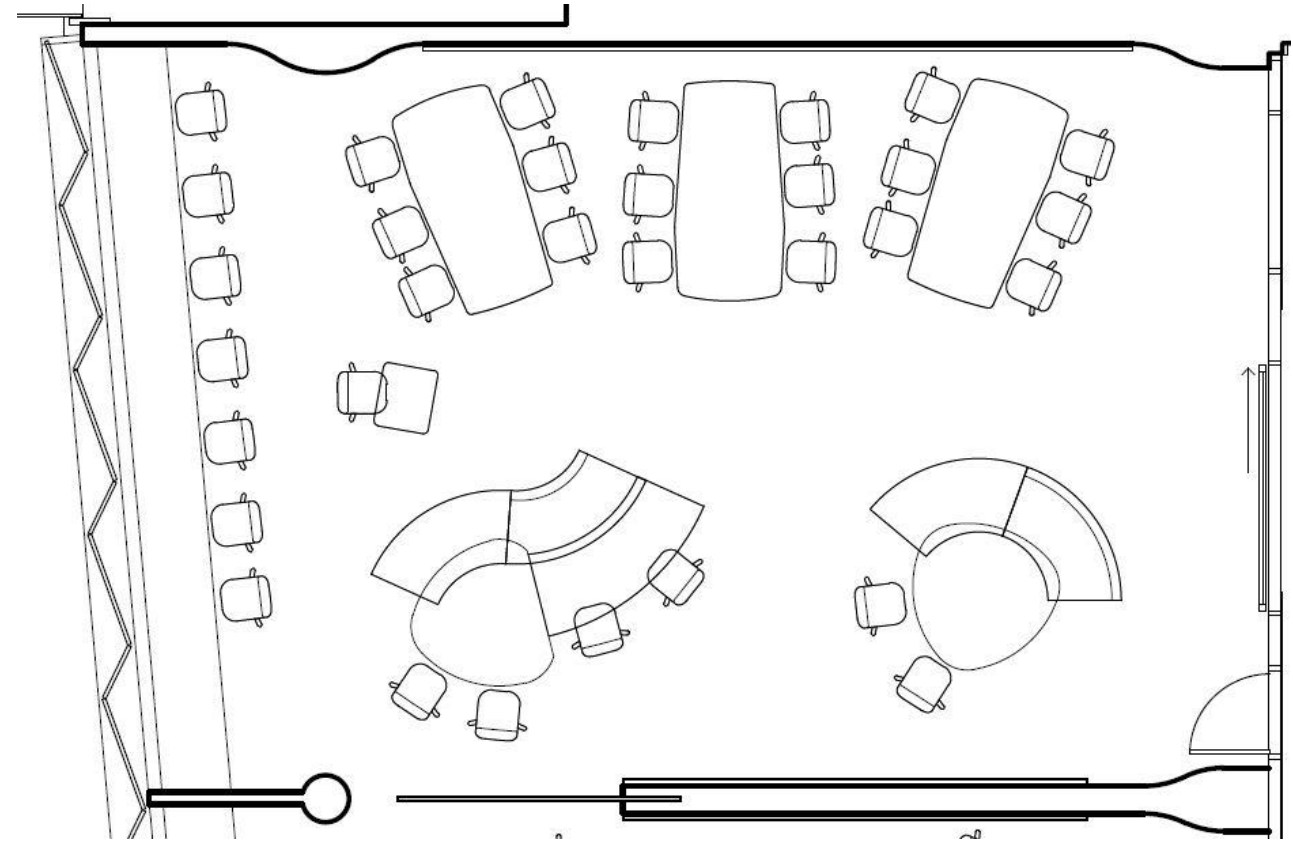
Interactive Tutorial

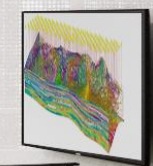
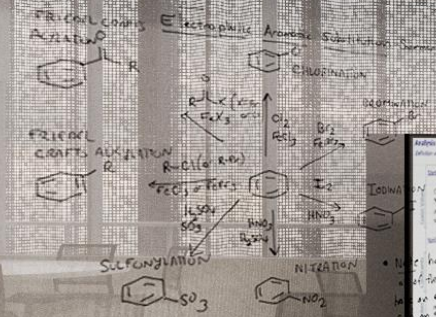
- 30 Seats
- Main display screen & writeable surface at front of room
- Camera capture to writeable surface
- Supplementary mobile display screens
- Maximise glazing for natural light & learning on display



Interactive Tutorial

- 30 Seats
- Main display screen & writeable surface at front of room
- Camera capture to writeable surface
- Mobile display screens distributed
- Varied furniture settings for formal & informal

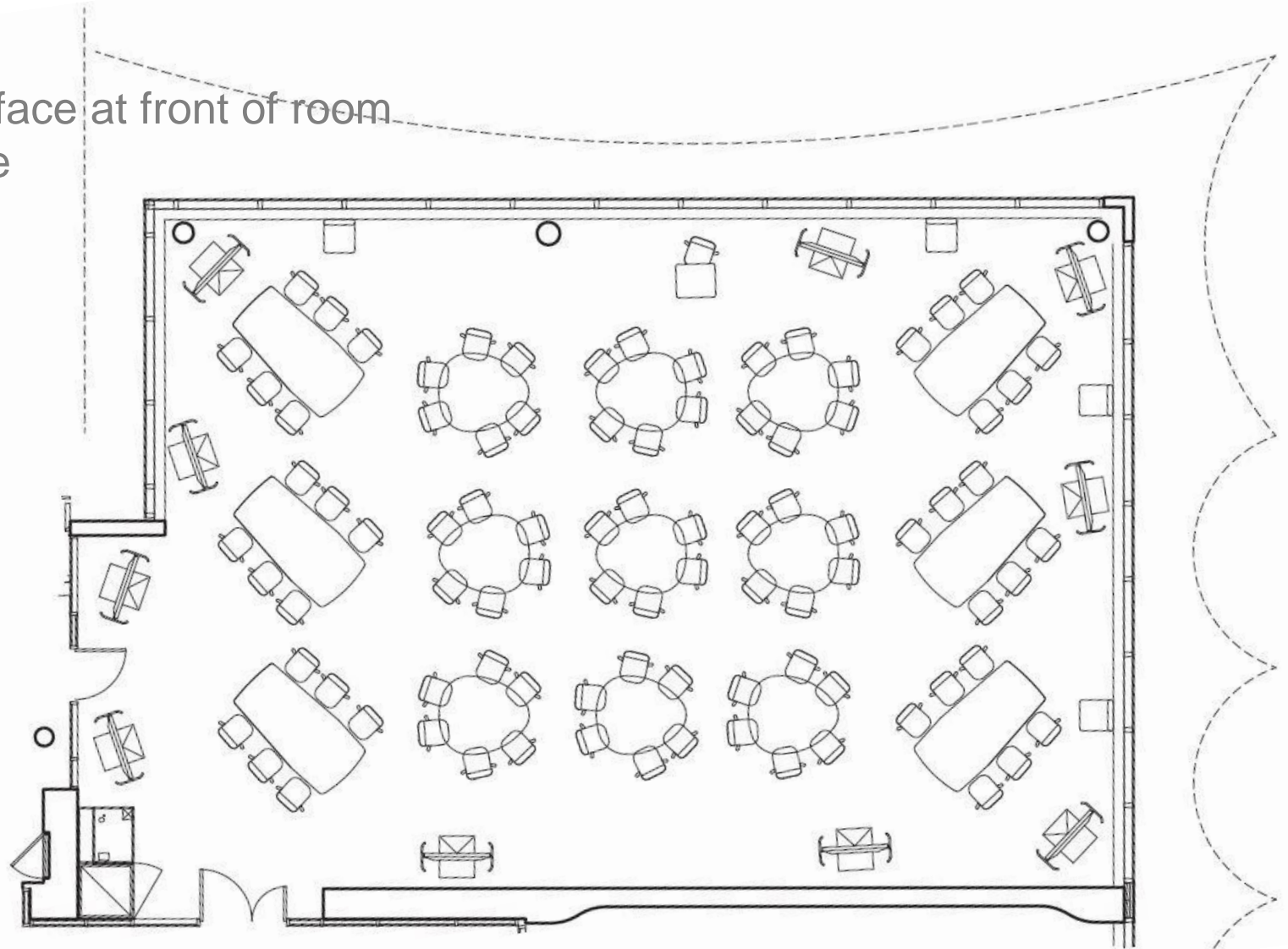




Page 1
Page 2
Page 3
Page 4
Page 5
Page 6
Page 7
Page 8
Page 9
Page 10
Page 11
Page 12
Page 13
Page 14
Page 15
Page 16
Page 17
Page 18
Page 19
Page 20
Page 21
Page 22
Page 23
Page 24
Page 25
Page 26
Page 27
Page 28
Page 29
Page 30
Page 31
Page 32
Page 33
Page 34
Page 35
Page 36
Page 37
Page 38
Page 39
Page 40
Page 41
Page 42
Page 43
Page 44
Page 45
Page 46
Page 47
Page 48
Page 49
Page 50
Page 51
Page 52
Page 53
Page 54
Page 55
Page 56
Page 57
Page 58
Page 59
Page 60
Page 61
Page 62
Page 63
Page 64
Page 65
Page 66
Page 67
Page 68
Page 69
Page 70
Page 71
Page 72
Page 73
Page 74
Page 75
Page 76
Page 77
Page 78
Page 79
Page 80
Page 81
Page 82
Page 83
Page 84
Page 85
Page 86
Page 87
Page 88
Page 89
Page 90
Page 91
Page 92
Page 93
Page 94
Page 95
Page 96
Page 97
Page 98
Page 99
Page 100

Lectorial

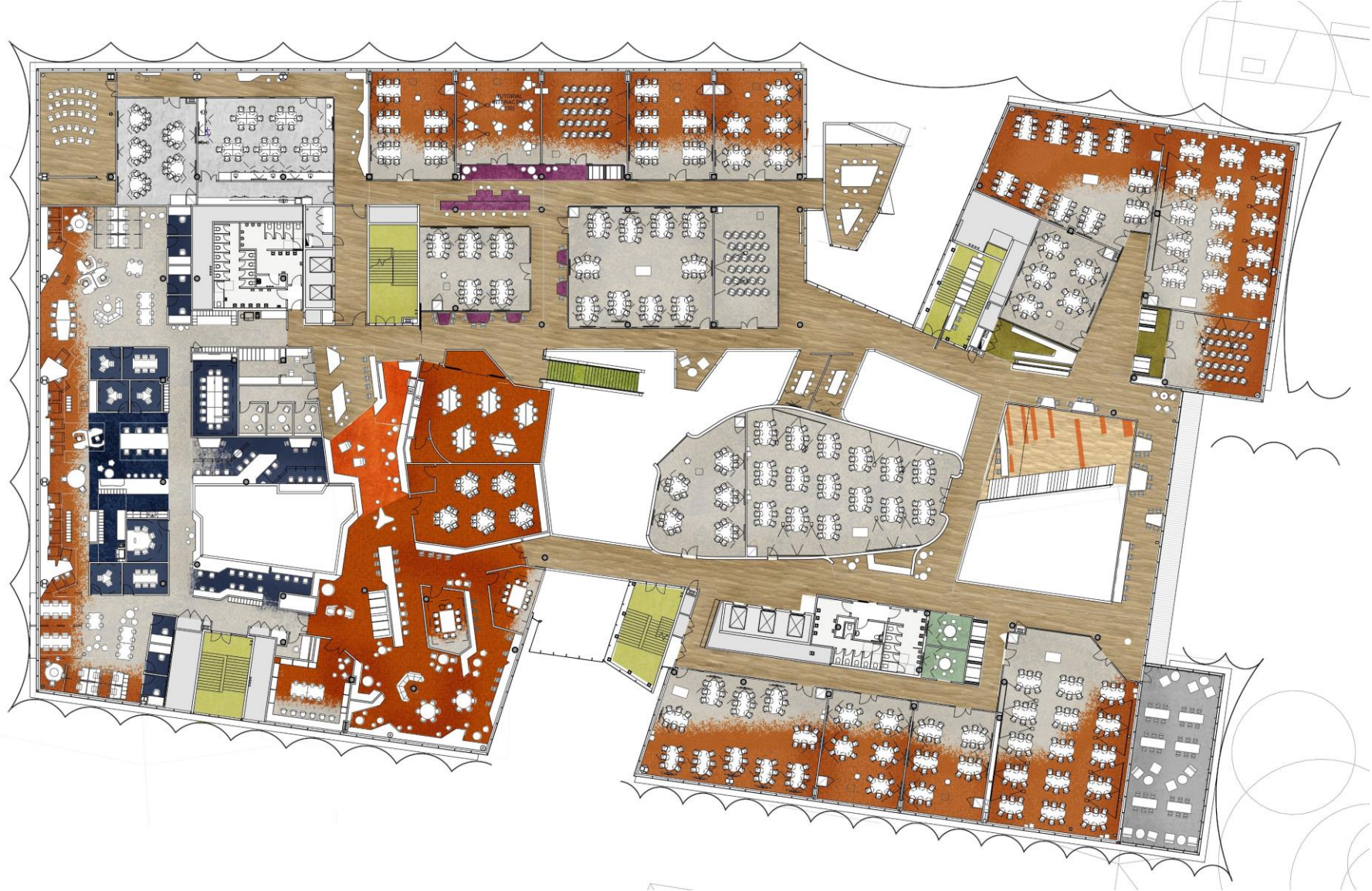
- 90 Seats
- Main display screen & writeable surface at front of room
- Camera capture to writeable surface
- Mobile display screens distributed



An Inhabited Roof

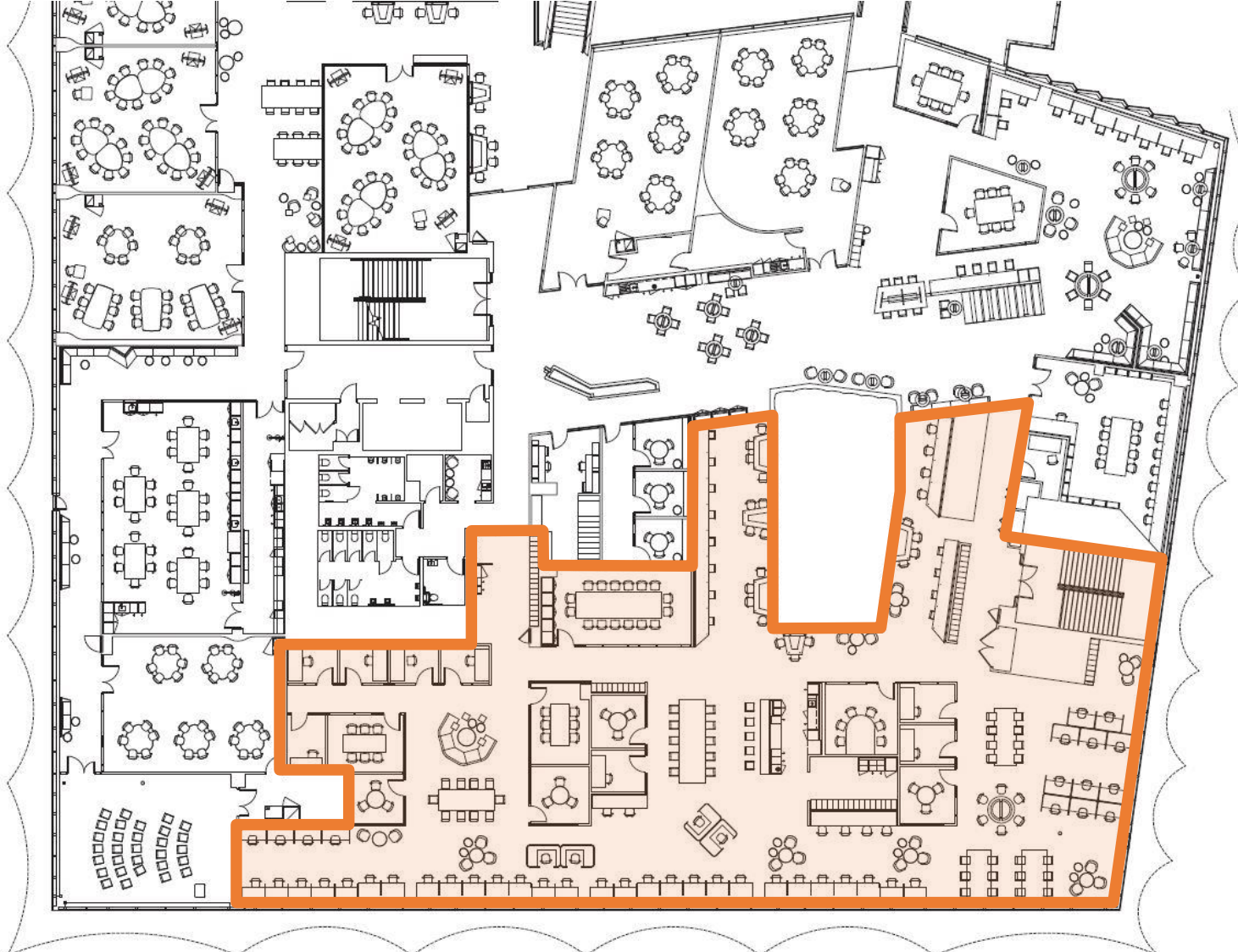


Level 3



HDR Hub

- Faculty of Education
- Activity-based workspaces for 210





Modular Construction & Prefabrication

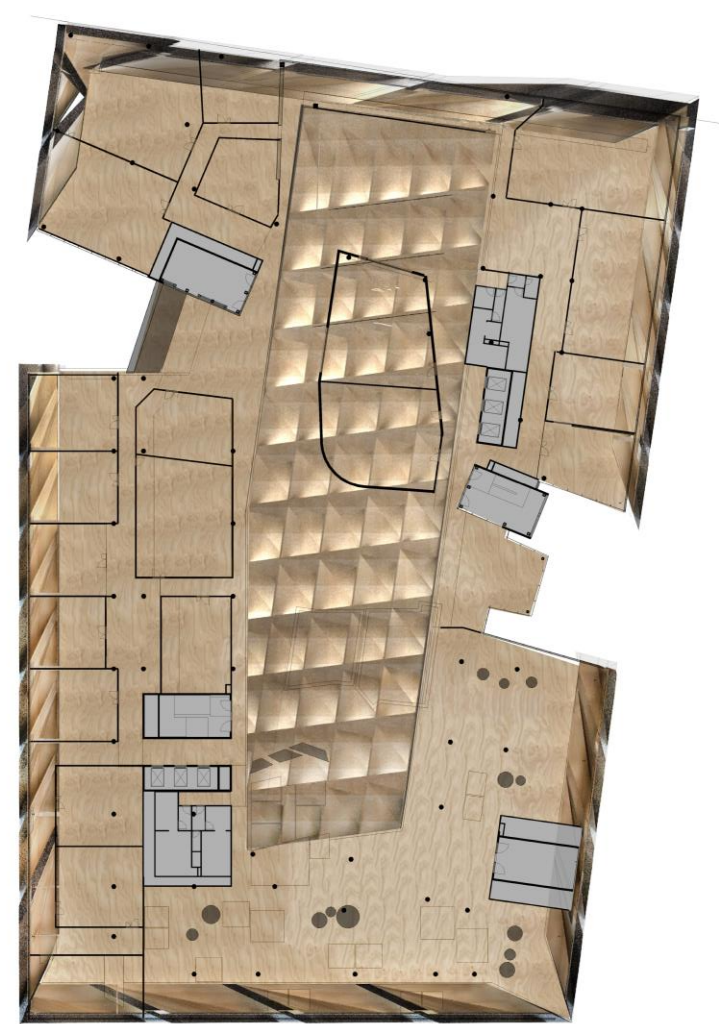
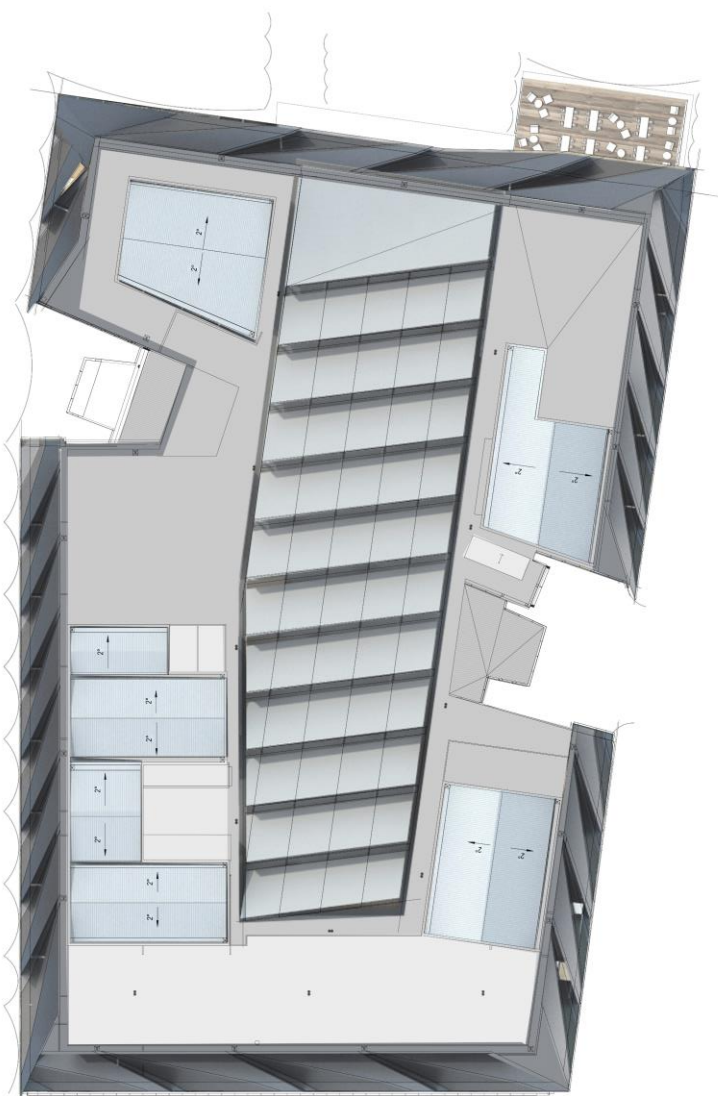


\$275M in

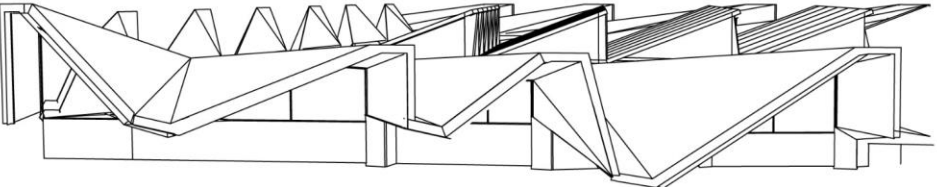
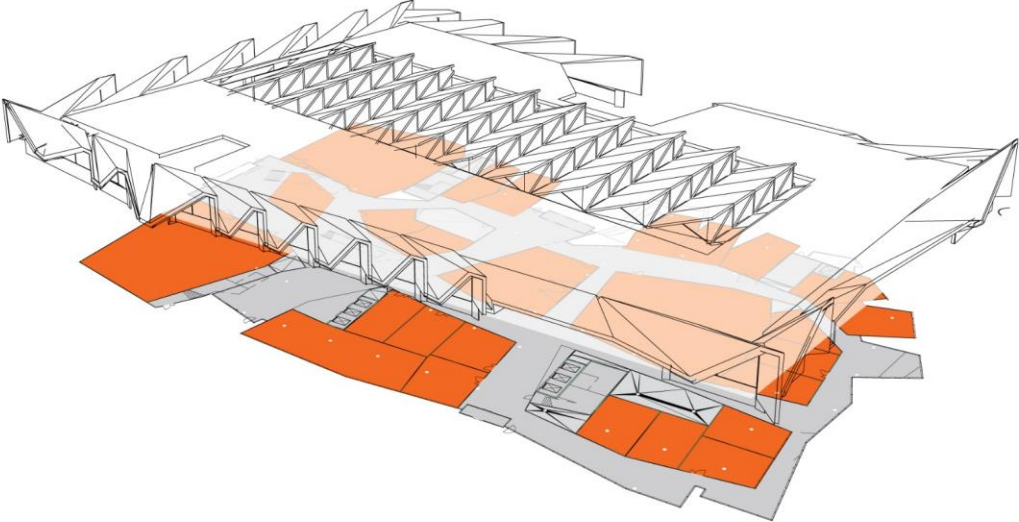


14 months

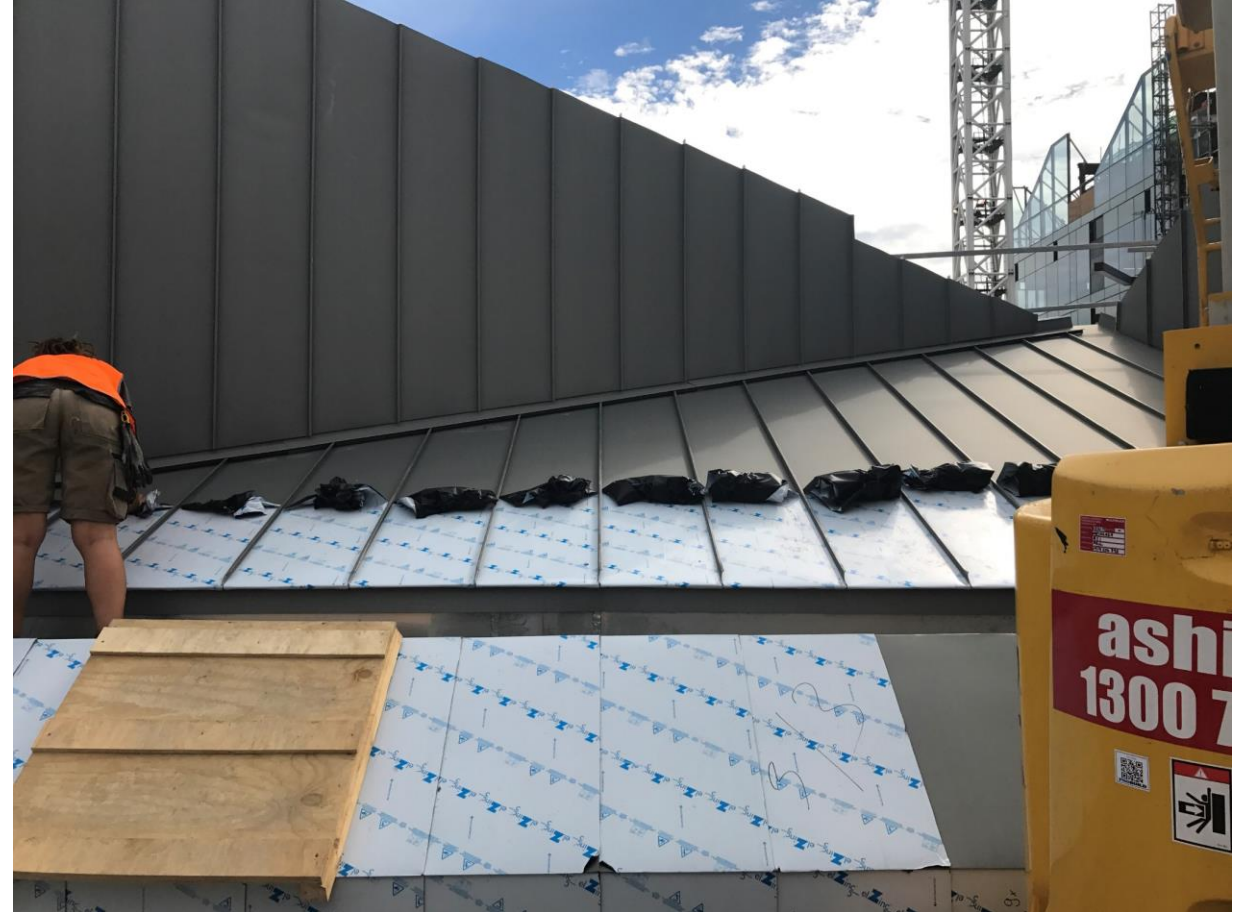




Roof Hoods

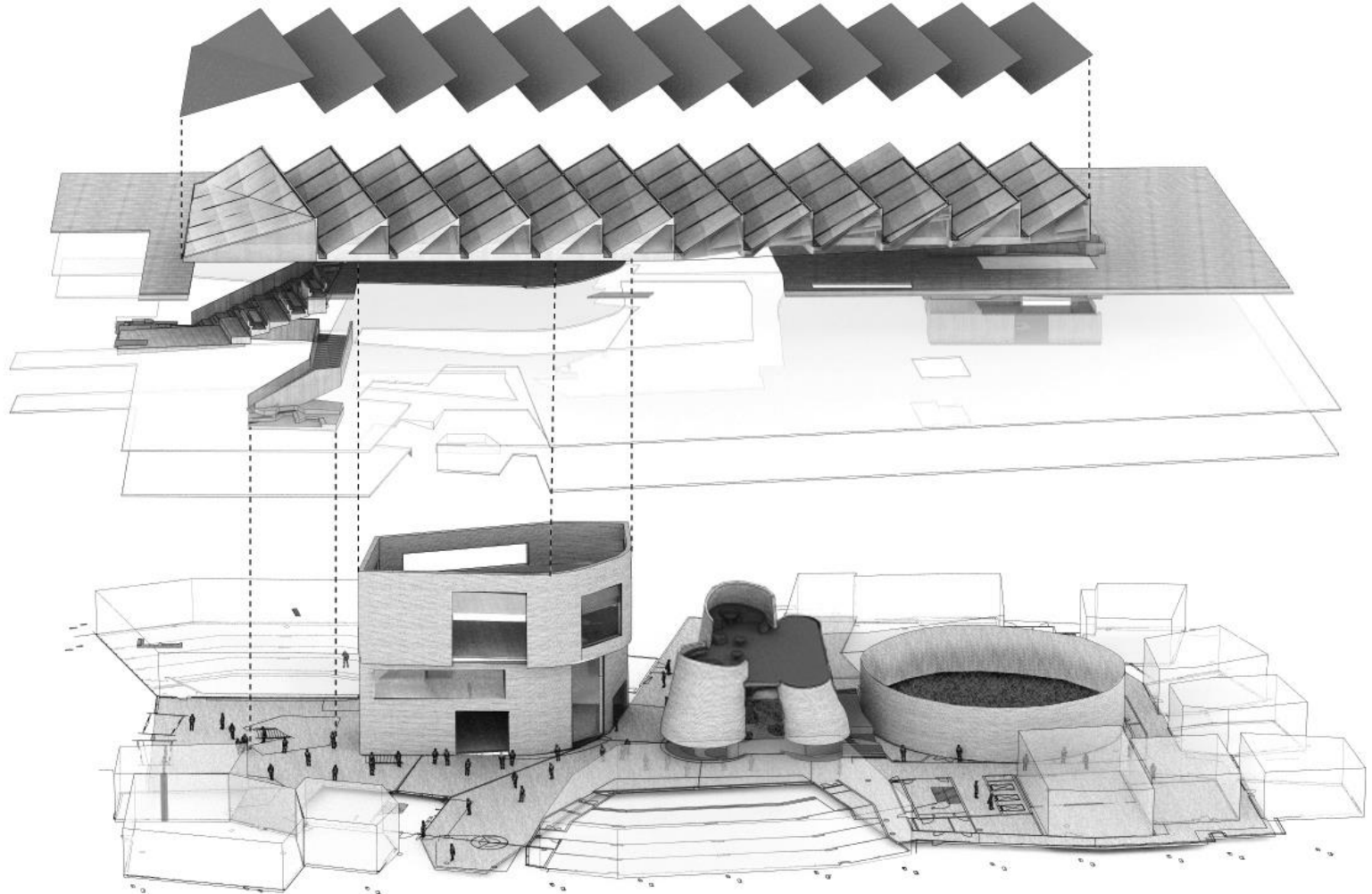


Roof Hoods

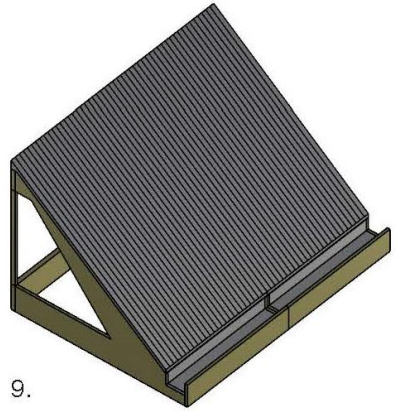
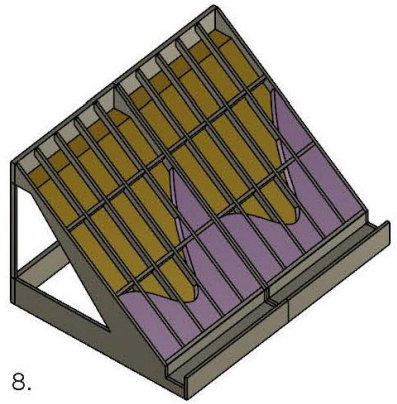
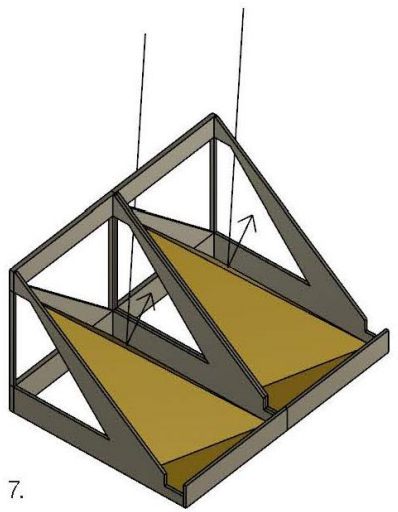
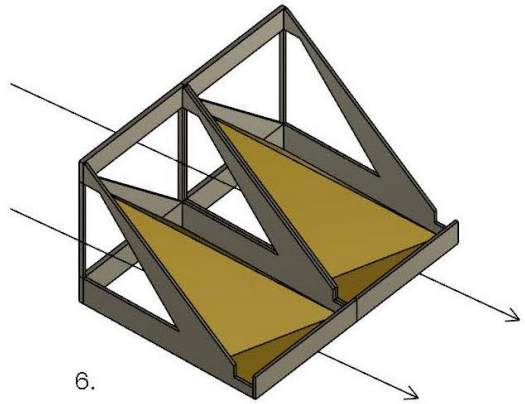
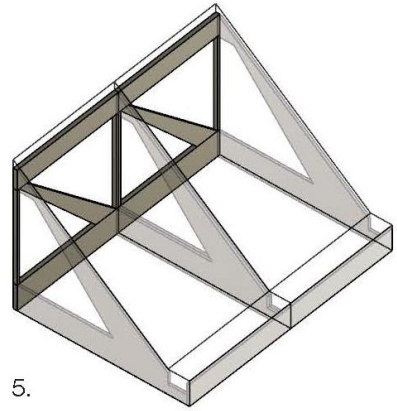
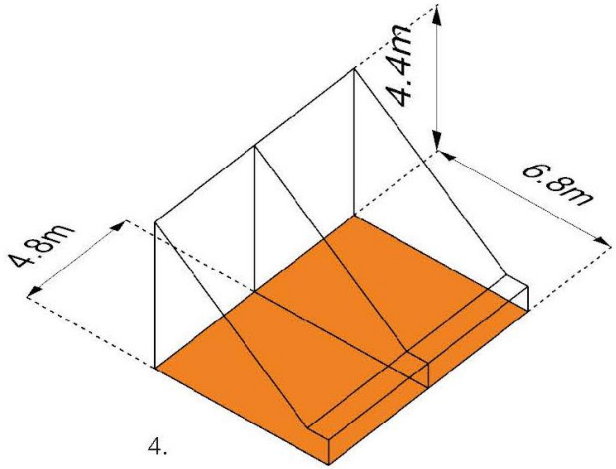




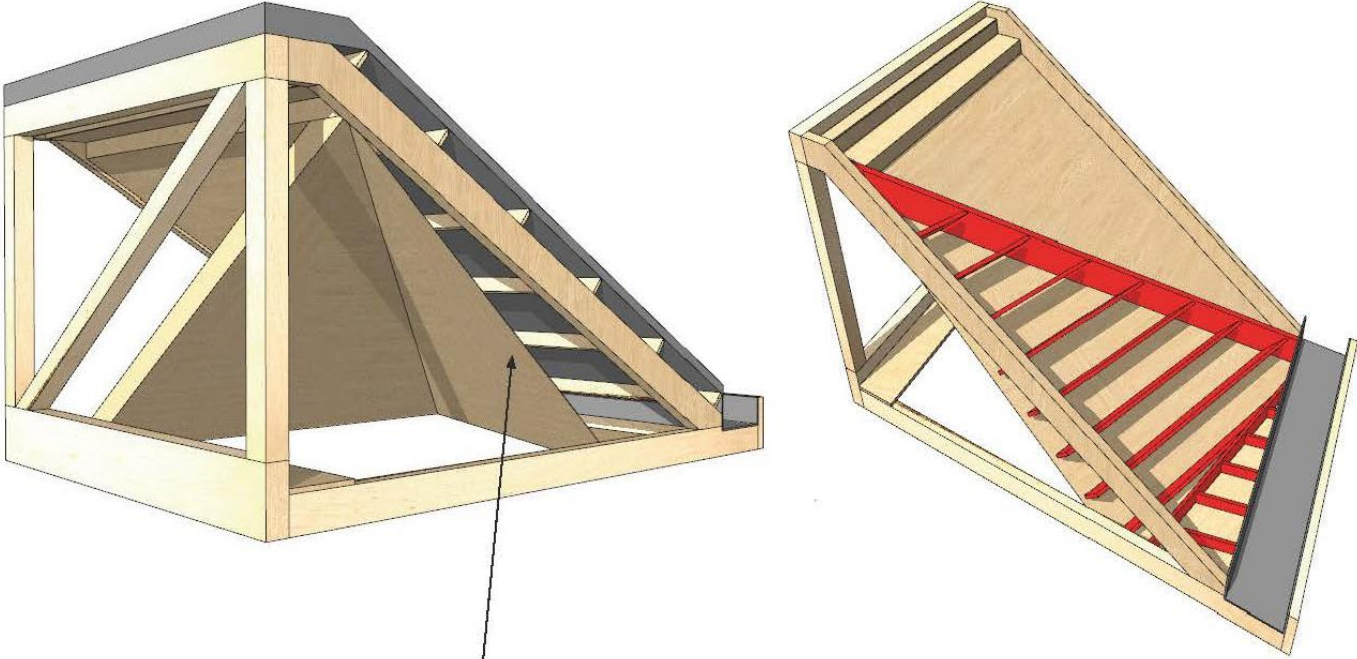
Saw Tooth Roof



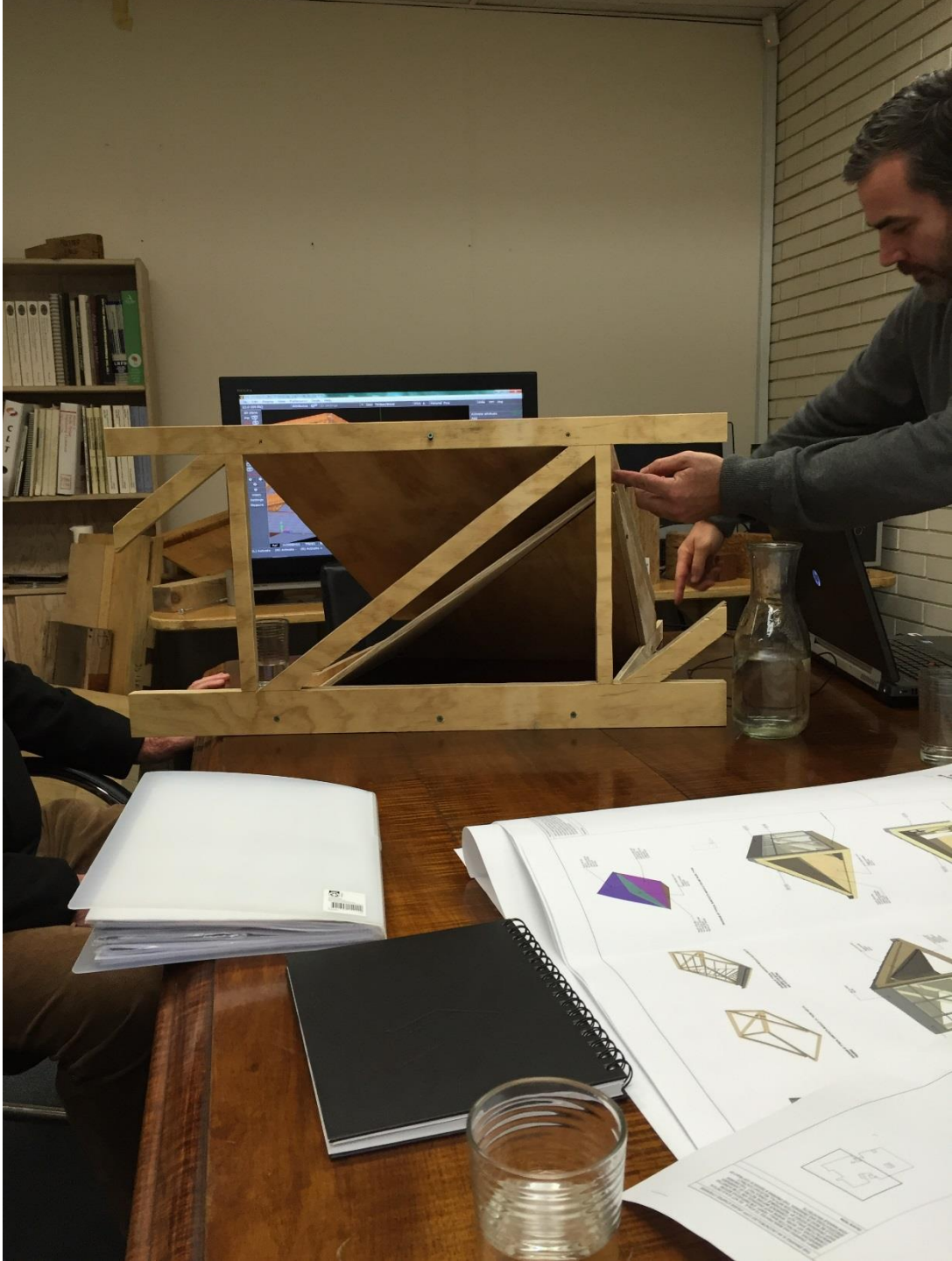
Saw Tooth Roof



Saw Tooth Roof



Fold In ceiling panel formed with minimal framing





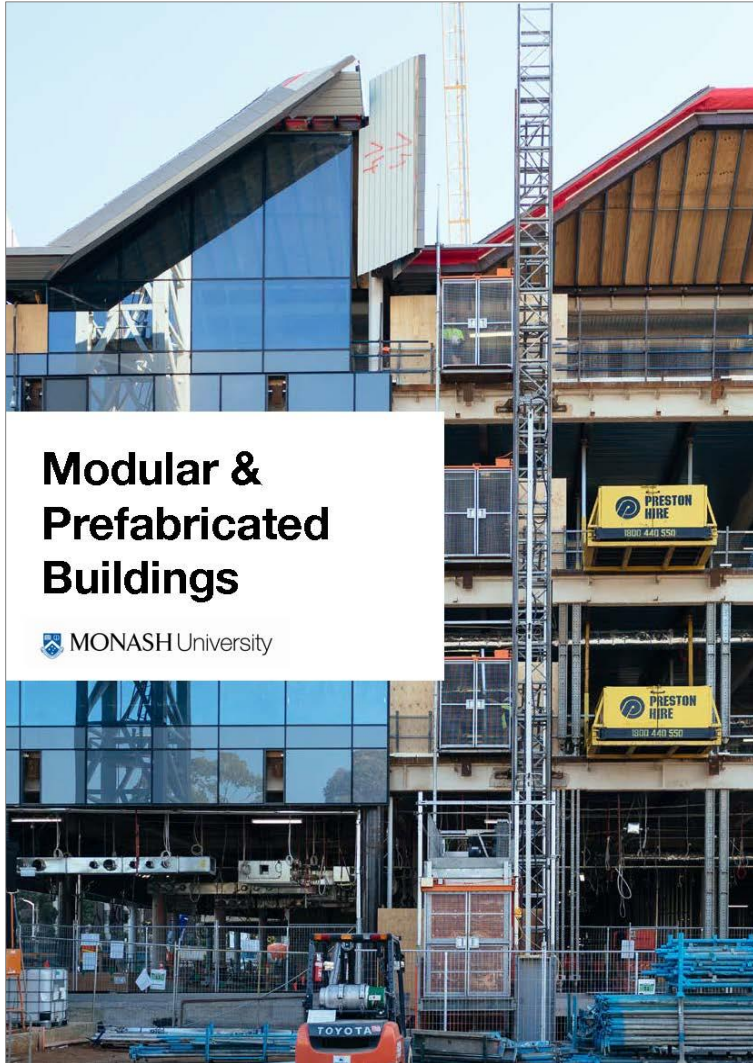
Saw Tooth Roof



Saw Tooth Roof



Research Report



Modular & Prefabricated Buildings

MONASH University

Structural Approach

Option 2 - CLT/Timber

Aecom to provide text on approach to engineering



Legend

- Primary Beam
- Secondary Beam
- Floor
- Column
- Precast Core



3D Vertical Prefabrication with Timber - Example - TSS System
Engineered Structure with Timber Beams (Slab)
Timber to exterior surface
Timber Slab (Structure as a Cladding)
Exterior cladding



3D Horizontal Prefabrication with Timber - Example - TSS System
400x100 Floor joist at 400mm spacing
Slab (Timber) supported with 2.4m x 2.4m steel and 2 plate in panel with a max span of 400mm

Chapter 3 - Case Studies

Laboratory Buildings

Structural Approach

3D Prefabrication - Module Unit

AECOM TO PROVIDE TEXT

